

EXPANDING THE SCOPE OF SOURCING RECLAIMED MATERIALS

CoC Revision Workshops
20 September 2023

Chain of Custody & Controlled Wood Team



AGENDA

- 1 Where are we with the revision?
- 2 What will we be doing?
- 3 What is currently included in STD-40-007?
- 4 Outstanding topics
- 5 We want to hear from you!
- 6 What's next?

Where are we with the
revision?



FSC-certified forest in Durango, Mexico

Two distinct phases:



Conceptual

- High level feedback
- Allows for informal settings
- Opportunity to find new stakeholder groups
- Includes prospective audiences
- Focus on simplicity in questions and information

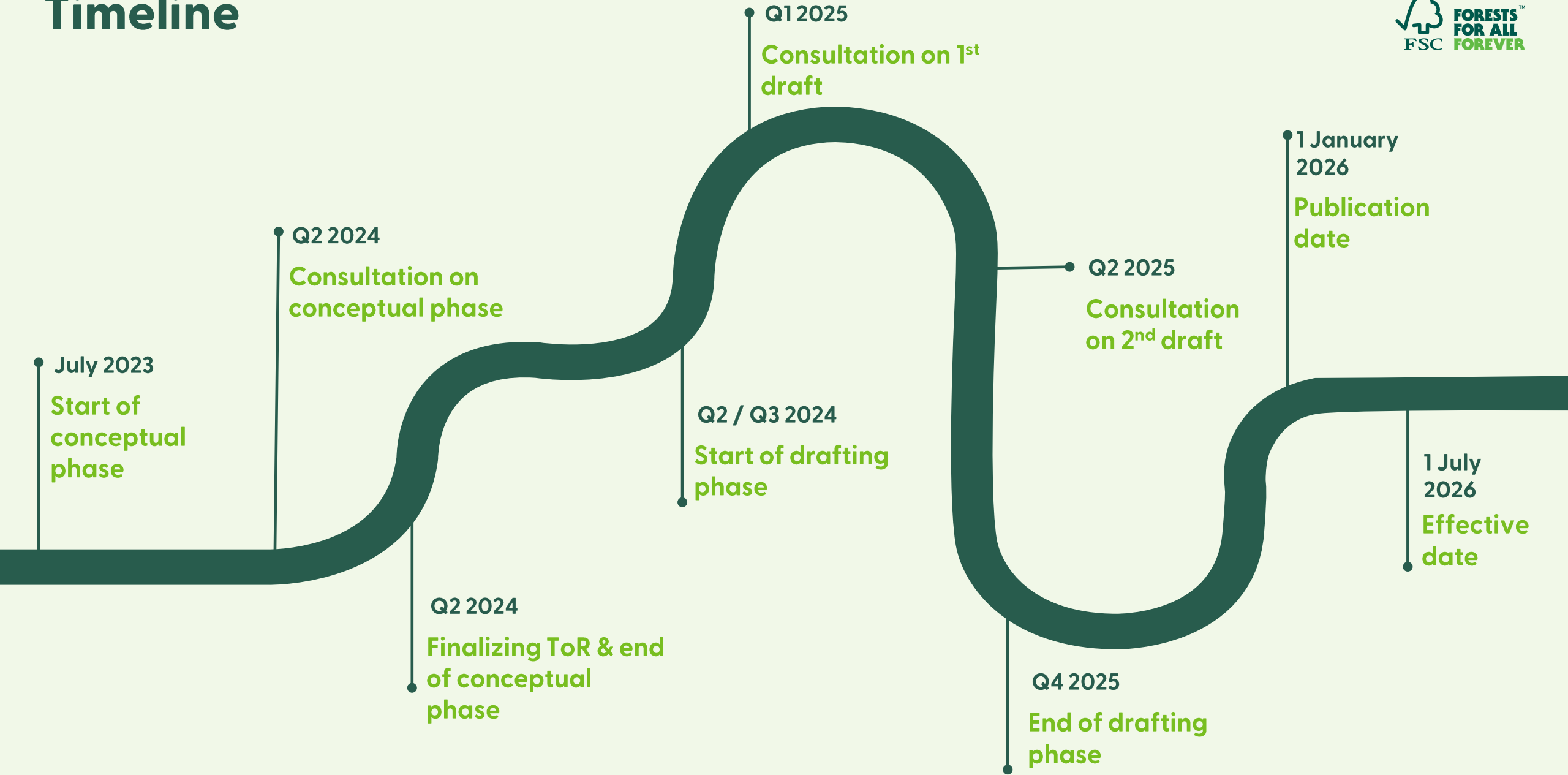
Establishing working group
Finalizing ToR



Drafting

- Detailed feedback
- Focus on more technical and committed audiences
- Connect results and outcomes from conceptual phase to the document and requirements

Timeline



What we will be doing?



What's being revised

FSC-STD-40-004
*Chain of Custody
Certification*

FSC-STD-40-007
Sourcing
Reclaimed
Material

FSC-STD-40-003
Chain of Custody
for Multiple Sites

FSC-STD-20-011
*Chain of Custody
Evaluation*

FSC-PRO-40-003
Development of
National Group
Chain of Custody
Eligibility Criteria

Motions to be addressed

MOTION 28

Overcome Value Chain Barriers for small operations by remedying identified problems in the CoC procedures, thereby increasing participation.

MOTION 50

Policy Motion on the right of access to workers

MOTION 51

Policy Motion on the right of workers to elect their own Occupational Health and Safety representative(s).

MOTION 55

Increase system transparency regarding organizations and products certified through Chain of Custody certification.

Examples of topics to be addressed

FSC-STD-40-003 FSC-PRO-40-003

- Alignment with 40-004
- Changes to the group eligibility criteria
- GDP, PPP, Global Competitiveness Index

FSC-STD-40-004 FSC-STD-20-011

- Incorporating outcomes of pilot projects
- Moving away from the “traditional” normative document
- Incorporating existing Advice Notes and Interpretations
- Clarity on requirements for outsourcing activities & contractors
- Expanding claim types
- Remote and hybrid evaluations
- Developing Mechanisms to Address Integrity Risks in FSC Certified Supply Chains

FSC-STD-40-007

- Incorporating circularity concepts
- Include certain co-products categories
- Treatment of salvaged wood and trees harvested in urban areas



**What is currently
included in FSC-STD-
40-007?**



Important terminology in FSC-STD-40-007:

1. Reclaimed material
2. Pre-consumer reclaimed material
3. Post-consumer reclaimed material
4. Point of reclamation
5. Salvaged wood
6. Co-product

According to FSC-STD-40-007



Reclaimed material: Material that demonstrably would have otherwise been **disposed of as waste** or **used for energy** recovery, but has instead been **collected and reclaimed** as input material, **in lieu of virgin material**, for **re-use, recycling**, re-milling in a manufacturing process or other commercial application. Inputs of the following material categories are classified as reclaimed material:

- a) FSC Recycled material;
- b) Post-consumer reclaimed material;
- c) Pre-consumer reclaimed material.

Pre-consumer reclaimed: Material that is reclaimed from a process of **secondary manufacture** or further downstream industry, in which the material has **not been intentionally produced**, is **unfit for end use** and **not capable of being re-used on-site in the same manufacturing process** that generated it.



According to **FSC-STD-40-007**



Post-consumer reclaimed: Material that is **reclaimed from a consumer or commercial product** that has been **used for its intended purpose** by individuals, households or by commercial, industrial and institutional facilities in their role as end-users of the product.

Point of Reclamation: The location, process or site where **material is diverted from the waste stream** from industrial, residential or municipal sources and reclaimed thereby constituting the **starting point** within the supply chain **for reclaimed material**.

Important terminology in **FSC-STD-40-007** :

1. **Reclaimed material**
2. **Pre-consumer reclaimed material**
3. **Post-consumer reclaimed material**
4. **Point of reclamation**
5. **Salvaged wood**
6. **Co-product**

Different rules apply for wood and paper



Wood

- Only post-consumer has a claim contribution to the product group

Paper

- Both post and pre-consumer have a claim contribution to the product group





FSC Mix 100%



FSC Recycled 100%



FSC Recycled credit



No FSC claims allowed



Some examples of output claims from reclaimed materials

Note: No FSC claim is allowed with Pre-consumer reclaimed wood

Exclusions in **FSC-STD-40-007**



Important terminology in **FSC-STD-40-007** :

1. Reclaimed material
2. Pre-consumer reclaimed material
3. Post-consumer reclaimed material
4. Point of reclamation
5. Salvaged wood
6. Co-product

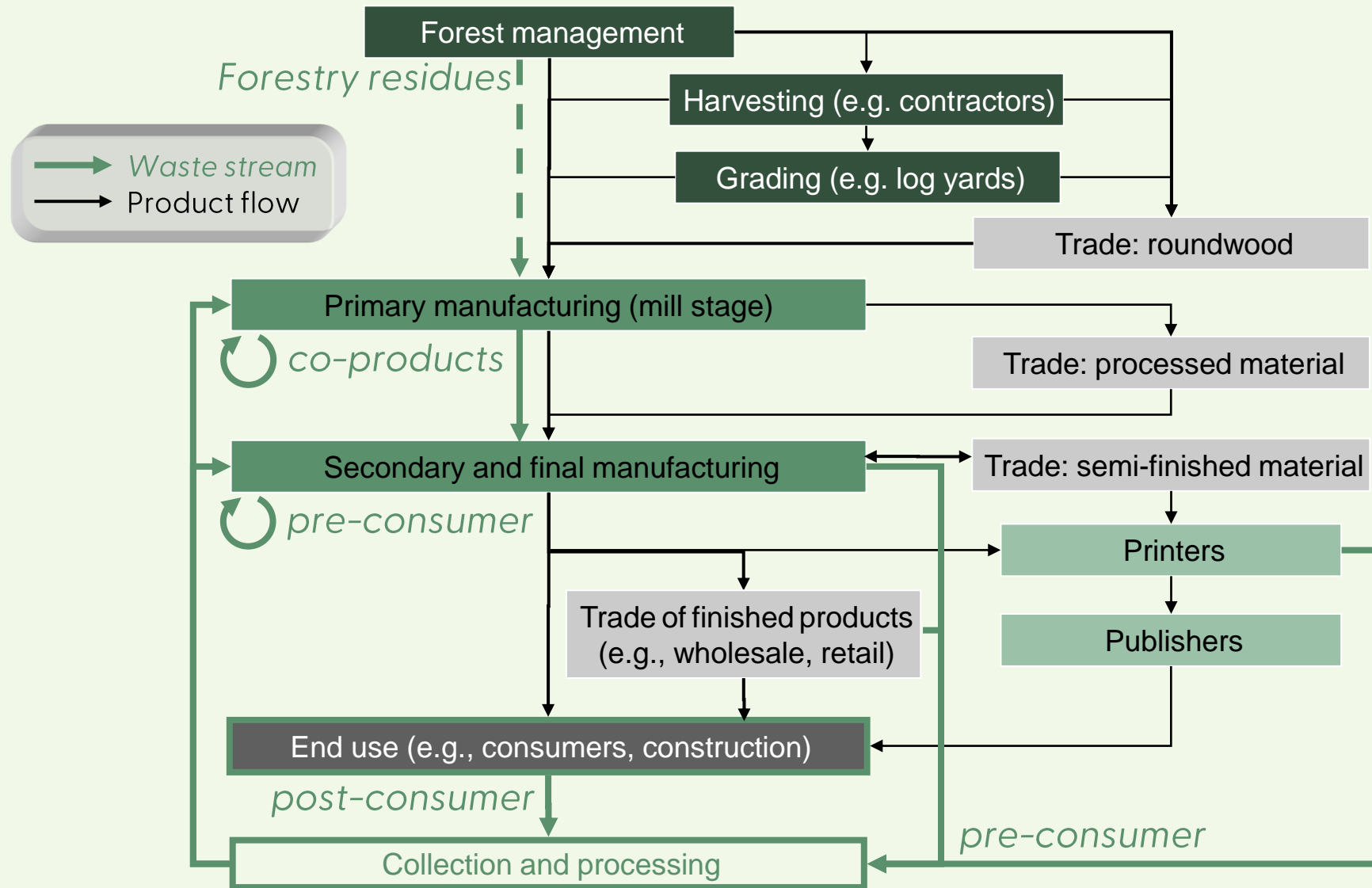
Salvaged wood

Wood that was:

- **naturally felled** (e.g., by storm or snow);
- felled and subsequently **lost or abandoned** (e.g., logs that sank to the bottom of a river or lake while being transported, felled trees never picked up in a log yard, logs **washed up on shore**);
- felled for purposes other than wood production (e.g., wood from **orchard clearance**, wood from **road clearance**, and **urban harvested wood**);
- **submerged by water** and **abandoned** as a consequence of artificial reservoirs and dam construction

Co-product: Output produced during the process of **primary manufacturing of another (principal) product** from the same inputs (e.g., sawdust, chips generated during lumber processing).

Products flow and waste streams



Downgrading rules



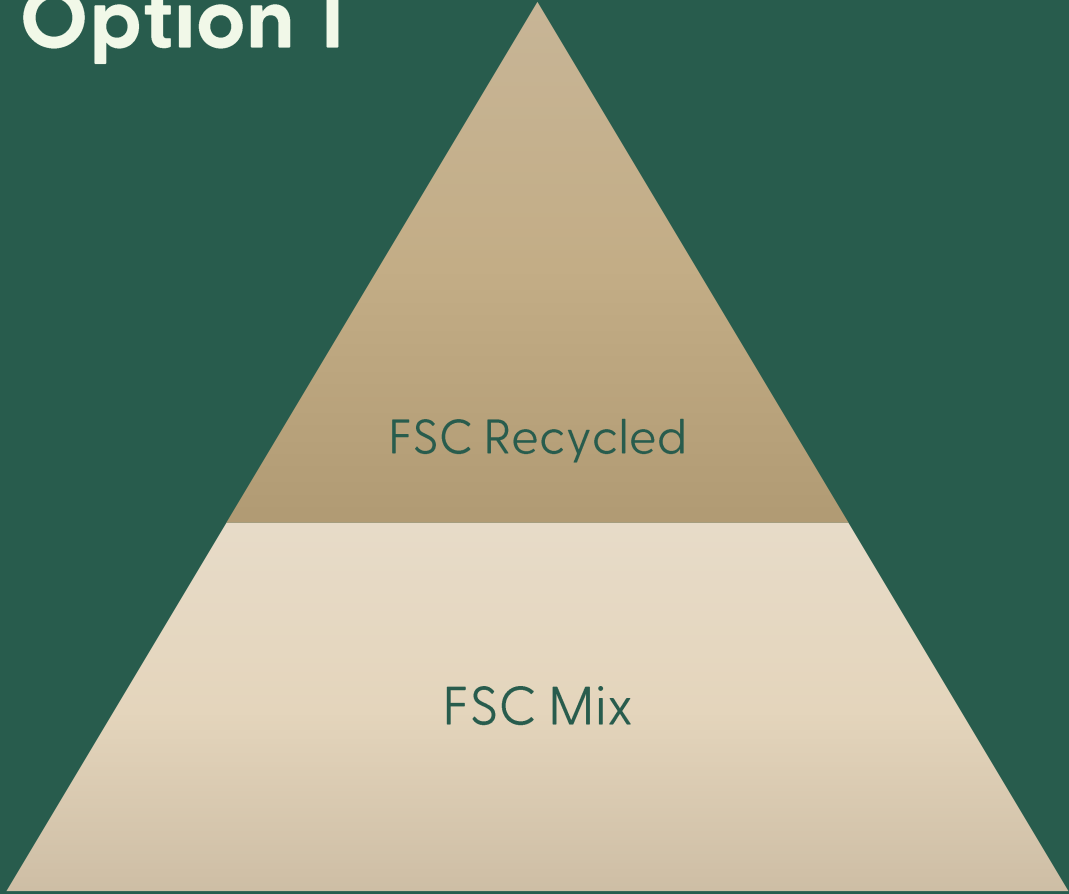
ADVICE-40-004-17



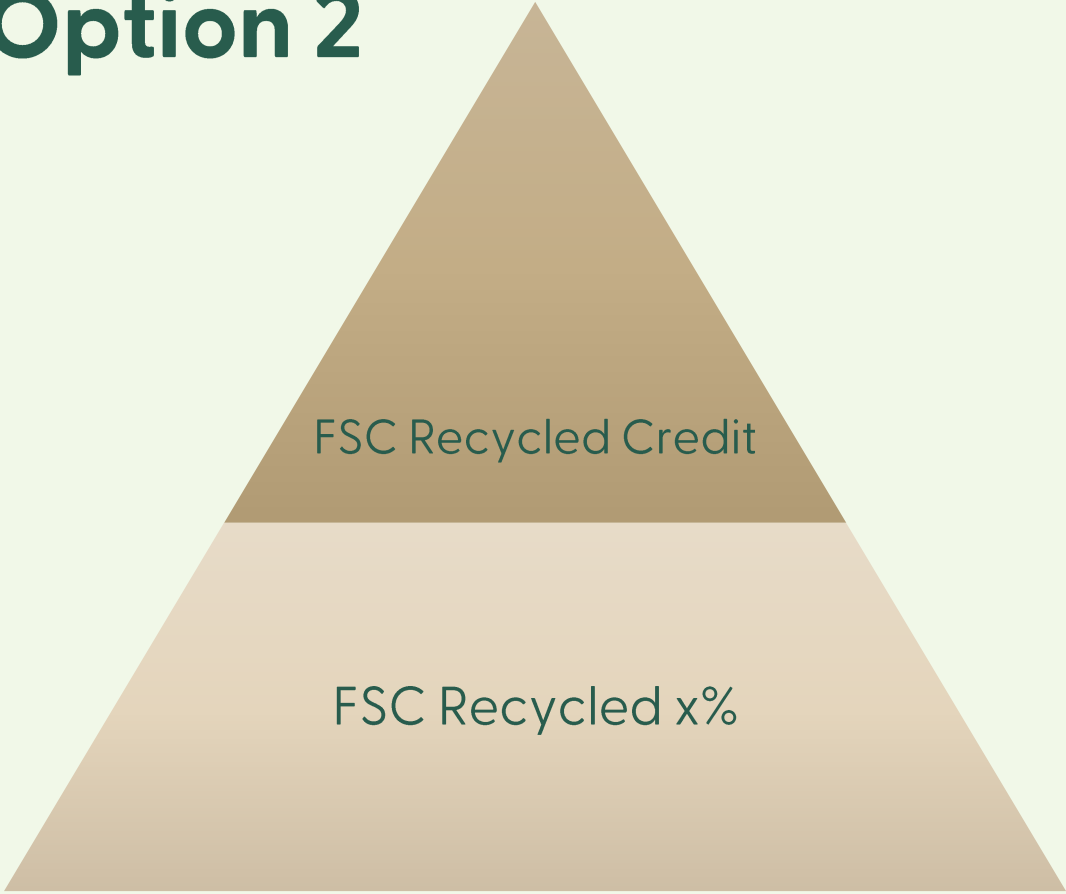
Organizations are allowed to claim products that are 100% made of reclaimed materials as FSC Mix [...].

Which should be allowed?

Option 1



Option 2



Expanding the scope of FSC-STD-40-007

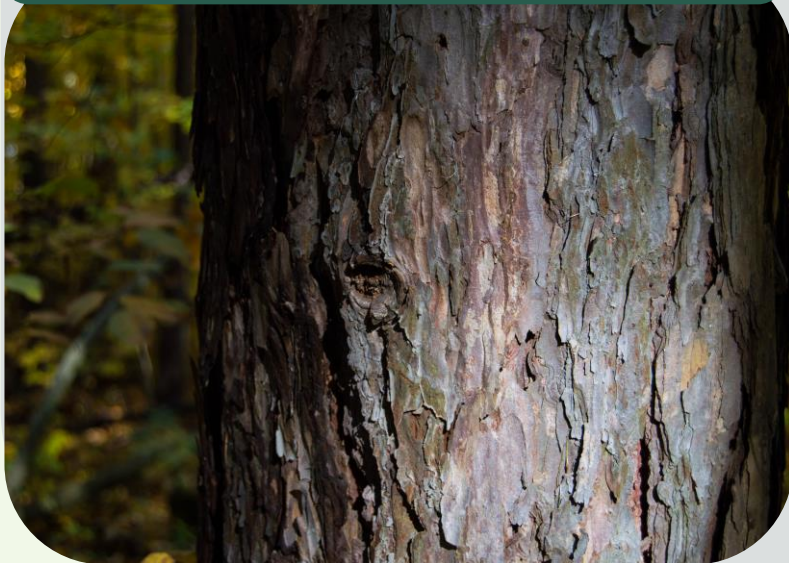


Expanding scope of reclaimed material

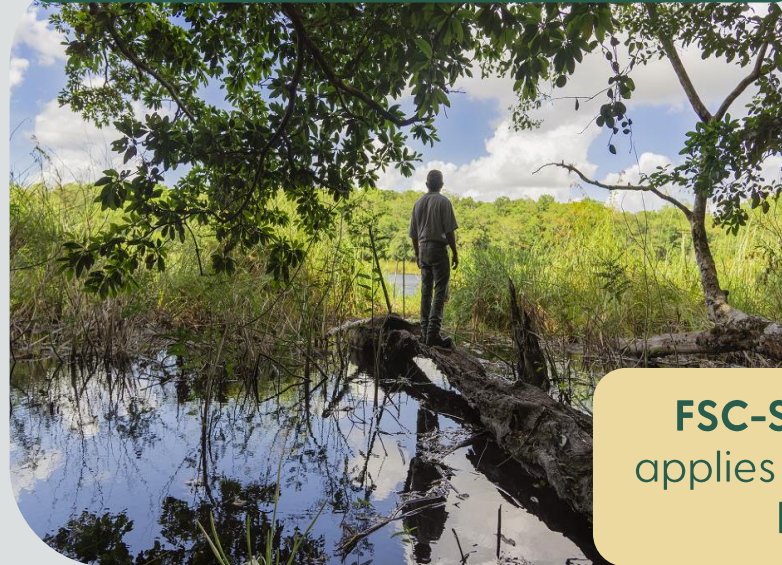
Currently these materials cannot be used as reclaimed material

Forestry Waste

Trees harvested in urban areas



Salvaged Wood



FSC-STD-40-005
applies when origin is known

Co-products



Going forward

Materials that can be included

Salvaged Wood

Trees harvested in urban areas

Co-products

Risks

- Hard to trace back to the origin
- Integrity risks
- Illegal harvesting
- 'Waste' vs 'Non-waste' definitions

Benefits

- Reduce pressure on forests for virgin material
- Reduce land waste
- Biomass source

**We want to hear
from you!**



What's next?

Stay Engaged

1

Visit the Process
Page for
FSC-STD-40-004
&
FSC-STD-20-011

2

Register via the
Interested
Stakeholders Form
for Participation in
this Revision Process

3

Synopsis report
including the
summary of
discussions and the
presentation will be
shared

4

Consultation on
conceptual phase in
Q2 2024

THANK YOU



Forest Stewardship Council®

FSC® International Center



Adenauerallee 134, 53113 Bonn, Germany

T +49 (0) 228 367 66-0

F +49 (0) 228 367 66-65

FSC International Center © All rights reserved

FSC® F000100

www.fsc.org