

# User Guide for the FSC Country Requirements Schedule

## Dashboard Layout

The following section outlines the elements of the FSC Country Requirements Schedule Dashboard.

## FSC Country Requirements Schedule

This dashboard provides an overview and a schedule for the development and revision of FSC Risk Assessments and Forest Stewardship Standards.

Last updated: 5 November 2024

Hover and click to explore.  
Unclick to reset.

**Select an FSC Document Type:**

Risk Assessments

Forest Stewardship Standards

**Decision-making body:**

All

**Select a region:**

All

**Select a country:**

All

**Filters**

To select multiple values in a filter, hold down the CTRL key while making your selection.

Country Requirements Map

**Legends**

- Drafting phase (according to PRO-60-006b)
- Consultation
- Final draft
- Planned approval date
- Publication date

Legends

Are you interested in taking part in an upcoming consultation? Click on the button below.

Public Consultation Form

## Country Requirements Schedule



## Document Type

Users can choose between two dashboard schedule views based on type of country requirements: one for Forest Stewardship Standards and another for Risk Assessments. Each view contains distinct sets of filters.

Select an FSC Document Type:

Risk Assessments

Forest Stewardship Standards

## Filters

### Risk Assessments

From left to right, users can view three filters: “**Decision-making body**”, “**Select a region**”, and “**Select a country**”. For the “**Select a country**” filter, users can select from available countries, which are also visible on the map and time schedule below. To compare multiple countries or regions, users should hold the CTRL key while making the selection to select the multiple countries. As users apply filters, the map and time schedule (Gantt chart) will update accordingly.

### Forest Stewardship Standards

In addition to the filters described above, there is one more filter: “**Type**”. This filter allows users to select between Development, Revision, and Transfer.

- A Development process involves creating a new standard, following the process requirements in [<FSC-STD-60-006 \(V1-2\) EN Process requirements for the development and maintenance of National Forest Stewardship Standards>](#).
- A Revision process focuses on updating an existing standard, also according to the process requirements in [<FSC-STD-60-006 \(V1-2\) EN Process requirements for the development and maintenance of National Forest Stewardship Standards>](#).
- More specifically, in Transfer processes the standard is being aligned with the most recent version of the FSC Principles & Criteria, following the procedure [<FSC-PRO-60-006 V2-0 EN Development and Transfer of National Forest Stewardship Standards to the FSC Principles and Criteria Version 5-1>](#).

## Country Requirements Map

The map shows the countries where registration with FSC is complete, and timelines have been confirmed. It also acts as a filter; clicking on any country will filter the schedule below to display information specific to that country.

## Legends

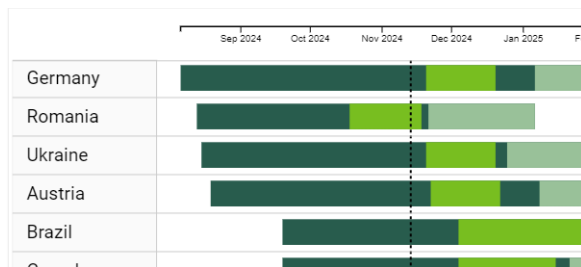
The legends are used to differentiate various phases and dates in the schedule on the dashboard.

### Stage/Phase legends

The stage/phase legends consist of three stages: “**Consultation**”, “**Final draft**”, “**Drafting phase (according to PRO-60-006b)**” for Risk Assessments or “**Drafting phase (according to STD-60-006)**” for Forest Stewardship Standards.

#### Legends

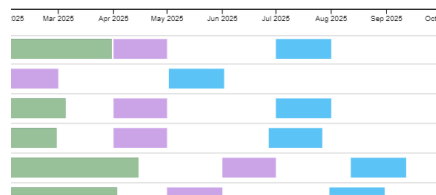
- Drafting phase (according to PRO-60-006b)
- Consultation
- Final draft



### Date legends

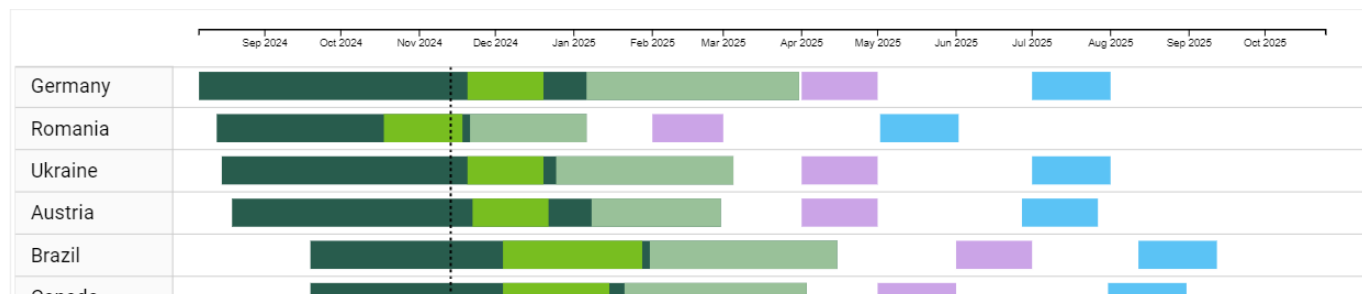
The date legends inform users about the two or three key dates that can be found on the schedule. These are “**Planned approval date**”, “**Publication date**”, and “**Effective date**” (this last one just for Forest Stewardship Standards). These dates are shown on the Gantt chart.

- Planned approval date
- Publication date



## Country Requirements Schedule

The schedule shows the **phases and dates** for the development of Risk Assessments or Forest Stewardship Standards in the form of a Gantt chart. Note that the dates are displayed as periods rather than specific dates.



## Other Elements

Currently, the Risk Assessment dashboard includes a link to a form that allows stakeholders to express interest in being contacted by a consultant and participating in the consultation period for a given risk assessment.

To access the consultation form, click here: [Form to participate in a Risk Assessment focused consultation](#)

Are you interested in taking part in an upcoming consultation? Click on the button below.

**Public Consultation Form**