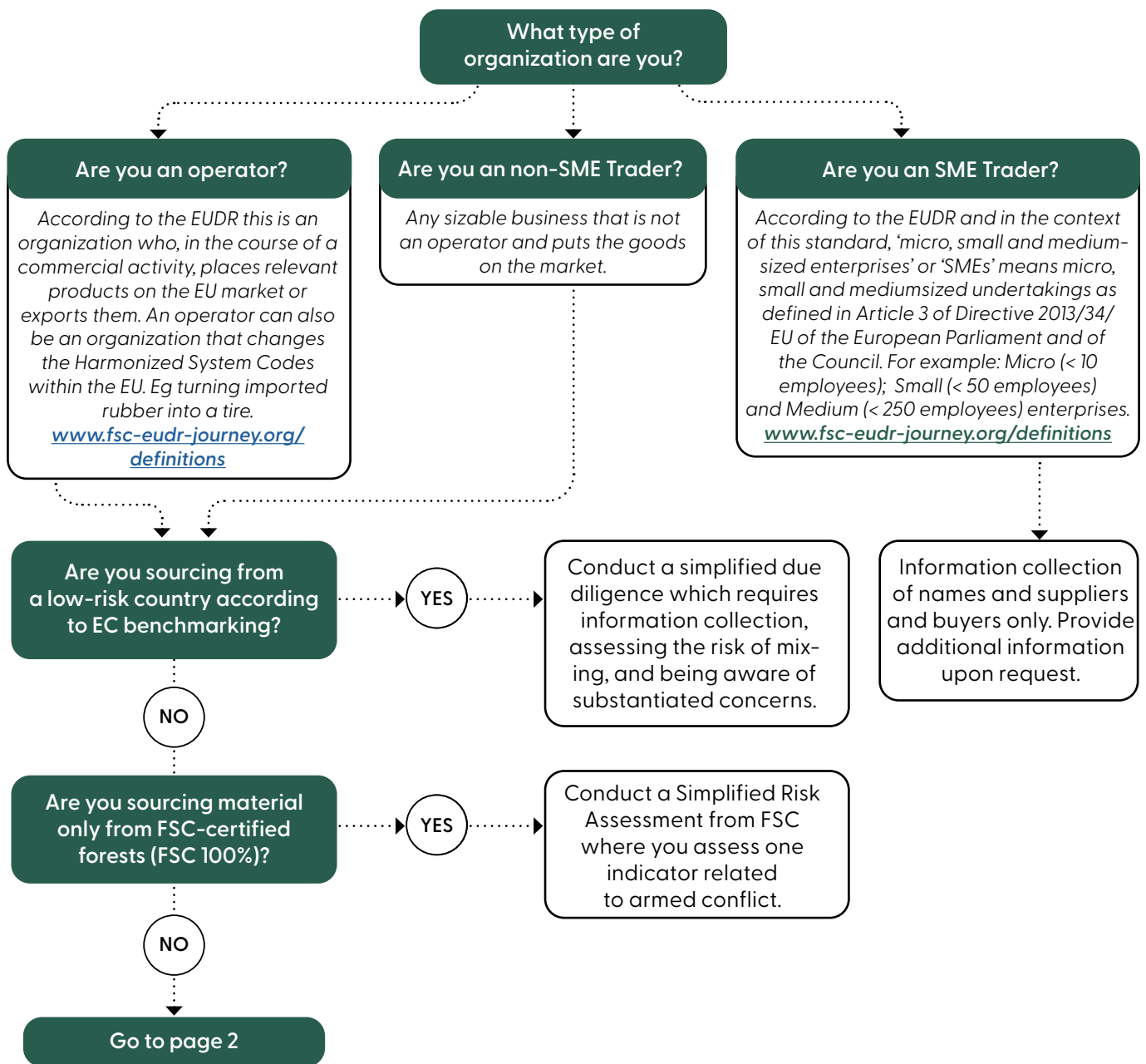


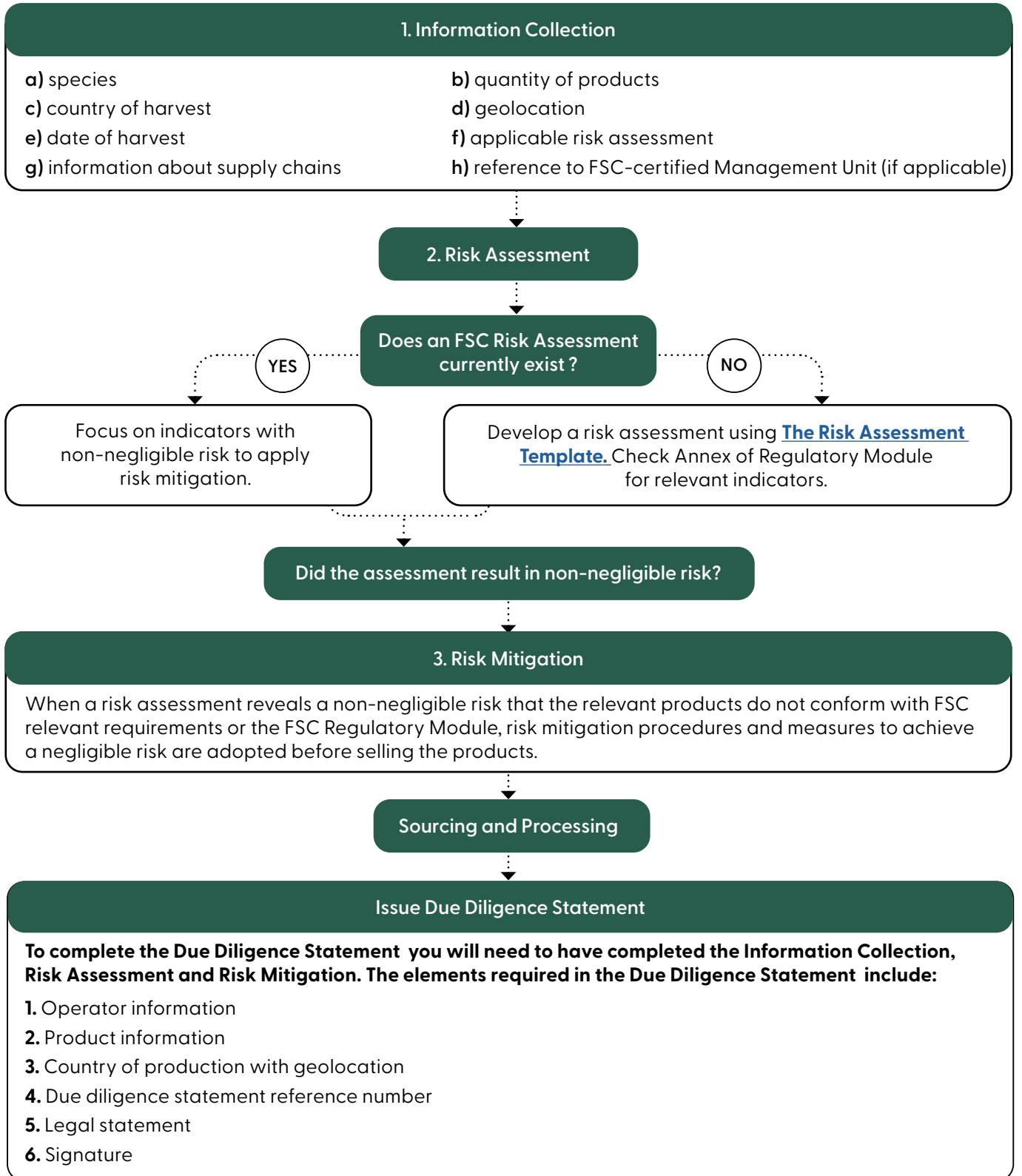


© FSC/ Julián Manrique

QUICK GUIDE FOR FSC REGULATORY MODULE CHAIN OF CUSTODY USERS



Review the below for an overview of your due diligence system requirements to align with EUDR using FSC’s Regulatory Module. Ensure the results of the due diligence system are incorporated before sourcing and processing material.





© FSC/ Jesús Antonio Moo Yam

Below are scenarios to provide a quick overview of the perceived level of effort when using FSC Regulatory Module (REG) to support EUDR compliance.

| Type of FSC claim sourcing from | Information Collection | Risk Assessment | Risk Mitigation |
|---------------------------------|------------------------|--|--|
| <p>Sourcing FSC 100%/REG</p> | <p>Received</p> | <p>Received from supplier</p> | <p>Risk has been mitigated by sourcing from FSC 100% and fulfilling FSC Regulatory Module requirements</p> |
| <p>Sourcing FSC 100%</p> | <p>To collect</p> | <p>Only need to check Indicator 26</p> | <p>If Indicator 26 is negligible risk, risk has been mitigated by sourcing from FSC 100%</p> |
| <p>Sourcing FSC Mix/REG</p> | <p>Received</p> | <p>Receiving from the supplier</p> | <p>Done by the supplier <small>*the level of effort depends on the outcomes from the risk assessment</small></p> |
| <p>Sourcing FSC Mix</p> | <p>To collect</p> | <p>Risk Assessment to be conducted. Risk Assessment may be available from the supplier</p> | <p>Risk mitigation is required where there is non-negligible risk</p> |

*Note: this is for guidance only and ultimately every organization is responsible for ensuring compliance and verifying the accuracy of received documentation.

- Relative effort