

# PRINCIPLES, CRITERIA & INDICATORS REVISION: ENVIRONMENTAL ASPECTS

FSC International  
June 25<sup>th</sup> 2025

# What to expect today

Today we are providing insight into what direction we are going to start setting the stage for the upcoming consultation

This webinar will share information and inspiration for upcoming discussions among stakeholders in the line-up to the consultation

We will launch a discussion forums in the FSC Member's Portal so our FSC Members can dive deeper into key topics

Presentation will be shared and summaries of the questions and answers will be published

Today's session is public and open to all stakeholders



# AGENDA



Topic	Time	Presenter
1 Welcome & Introduction	5 min.	Sandra
2 P&C and IGI revision process	10 min.	Sandra
3 Intended outcomes	15 min.	Franck
4 Biodiversity conservation	20 min.	Deniz
5 Climate change	20 min.	Deniz
6 Stay engaged Q&A	20 min.	Jannicka



# Introduction

Today we are covering the revision of FSC's Principles & Criteria and International Generic Indicators for you to understand, with a particular emphasis on environmental components:

- Why it matters
- Why we are here today
- How the work will be done
- What are the topics covered

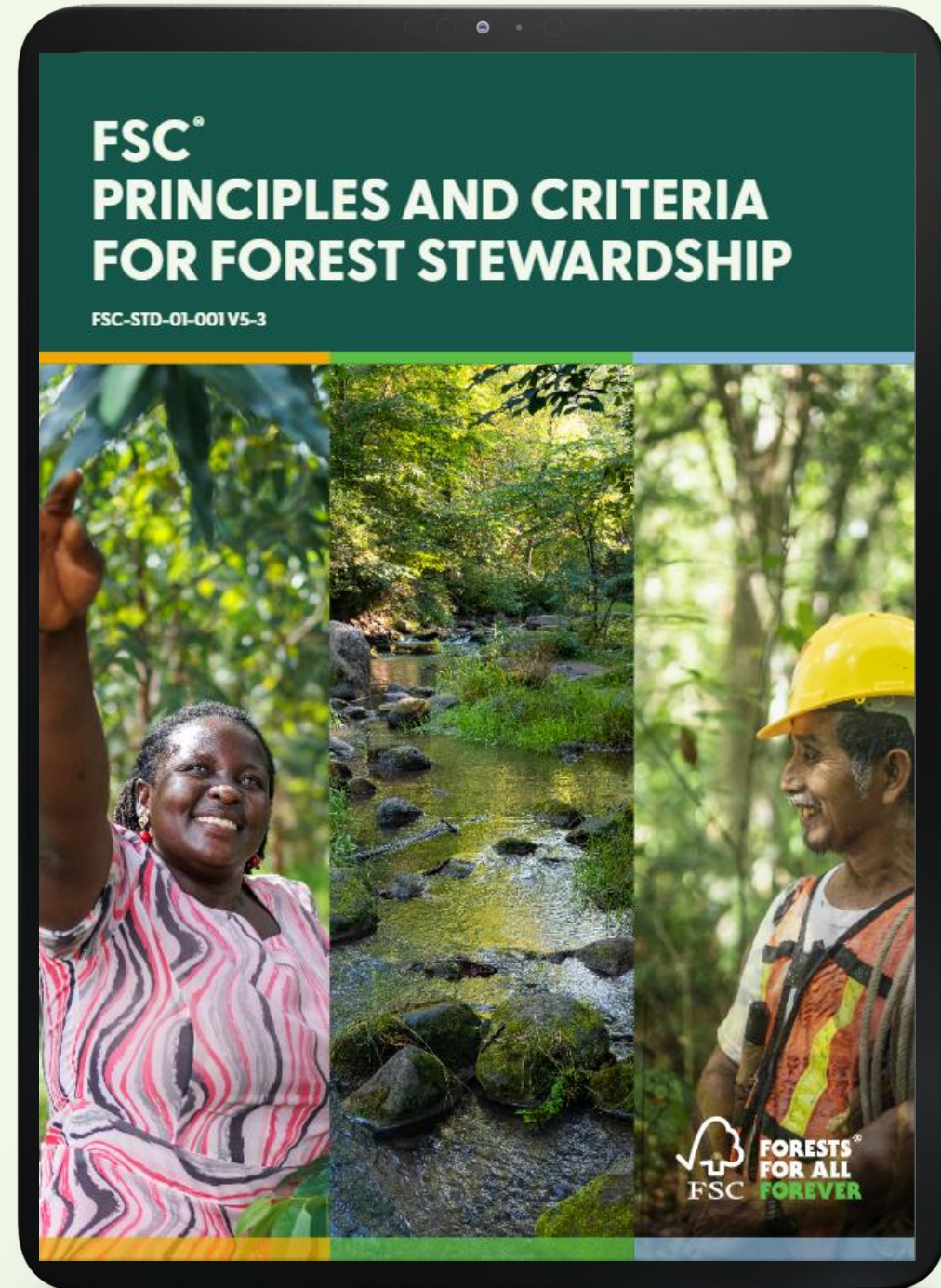




# FSC Principles and Criteria

♥ The Principles and Criteria (P&C) is the core standard for FSC Forest Management Certification

♥ The P&C define a global benchmark for good Forest Stewardship





Socially fair.



# Principles and Criteria for responsible forest stewardship



# FSC International Generic Indicators



Operationalize at national level the FSC Principles and Criteria Version 5-3



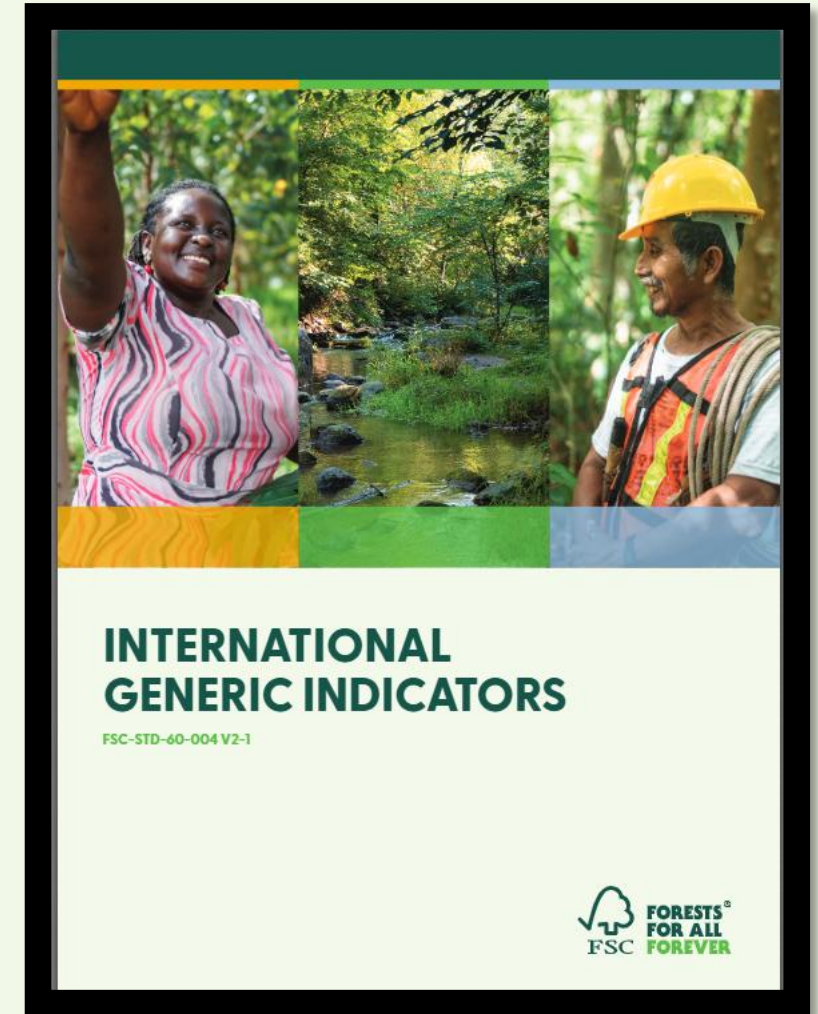
Ensure the consistent implementation of the P&C across the globe



Improve and strengthen the credibility of the FSC System

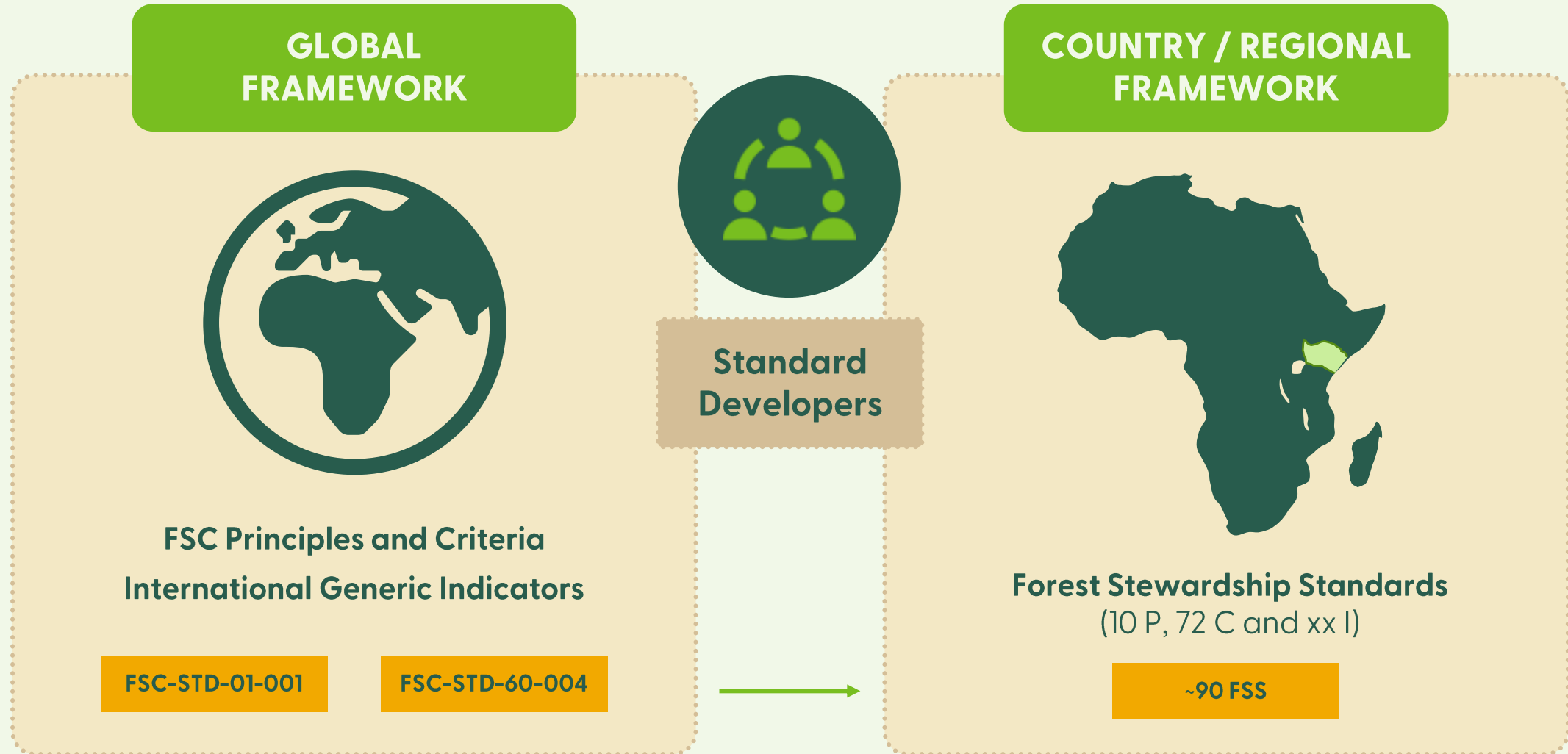


Improve the consistency and quality of Forest Stewardship Standards





# The role of FSC Principles and Criteria and International Generic Indicators



# Joint revision of several normative documents

FSC – STD-01-001  
FSC Principles and Criteria

FSC – STD-60-004  
International Generic Indicators

FSC – POL-10-004  
Scope of application of  
the FSC Principles and  
Criteria for Forest  
stewardship

FSC – POL-20-003  
FSC Policy on the  
excision of areas from  
the scope of certification

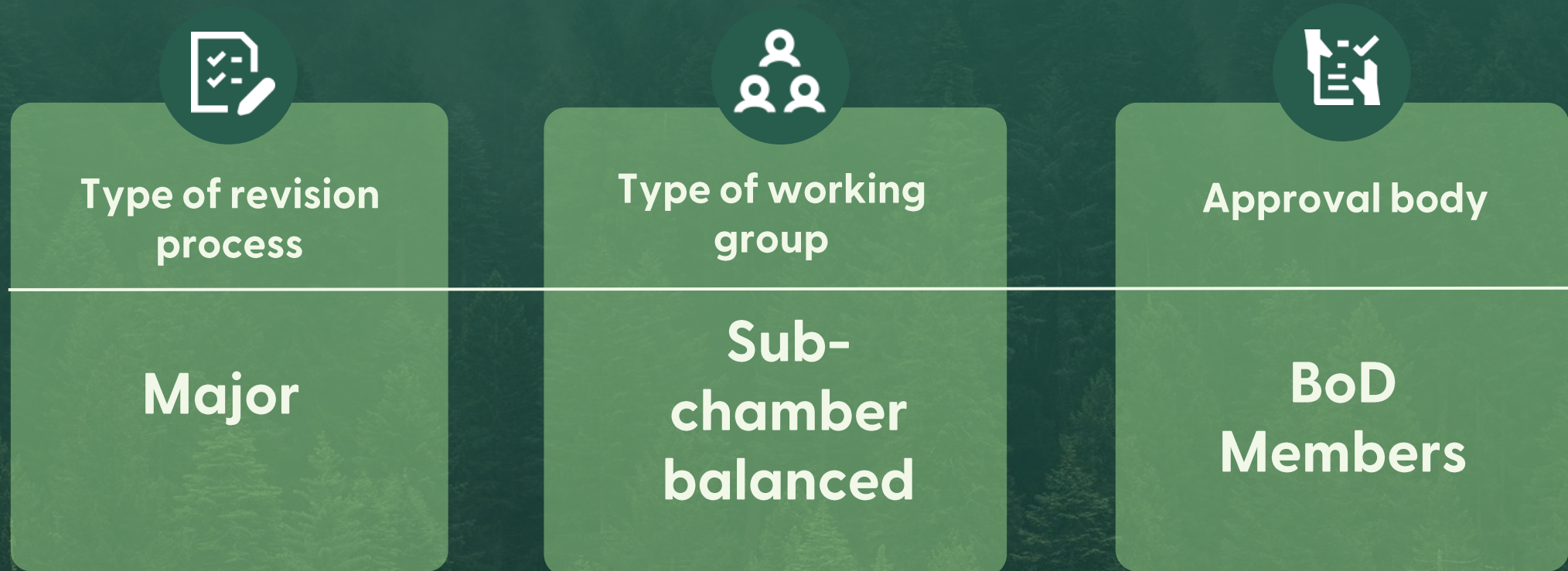
FSC – DIR-20-007  
FSC Directive on FSC  
Forest Management  
Evaluations





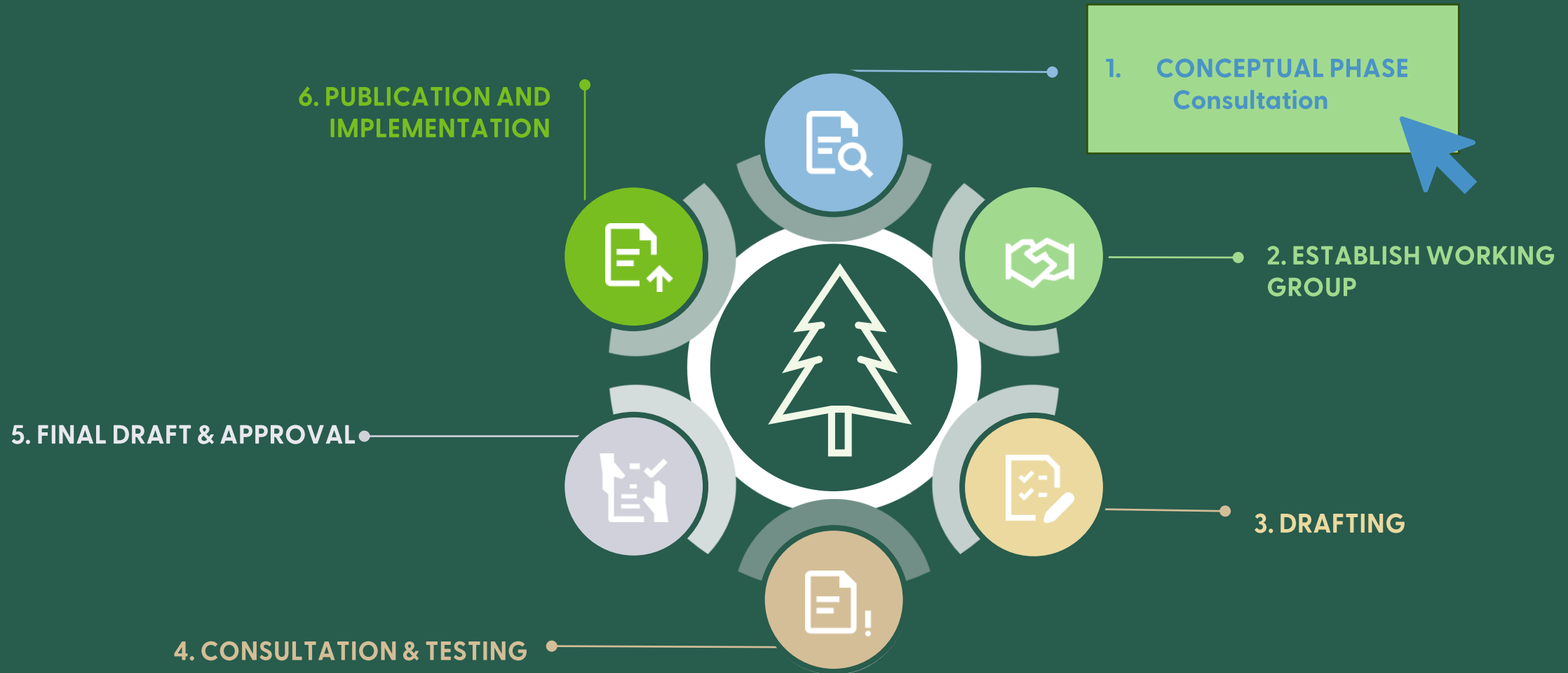
# **P&C and IGI (PCI) revision process**

# How we are conducting the revision

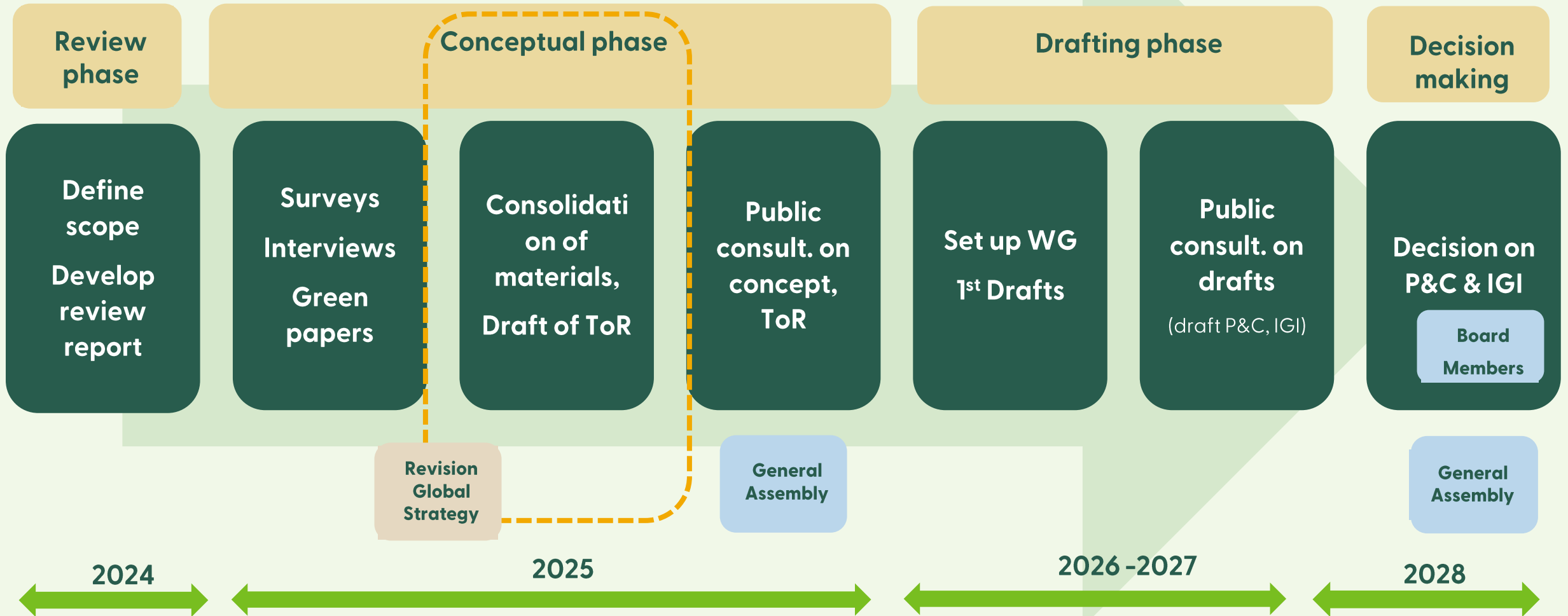




# Standard setting process

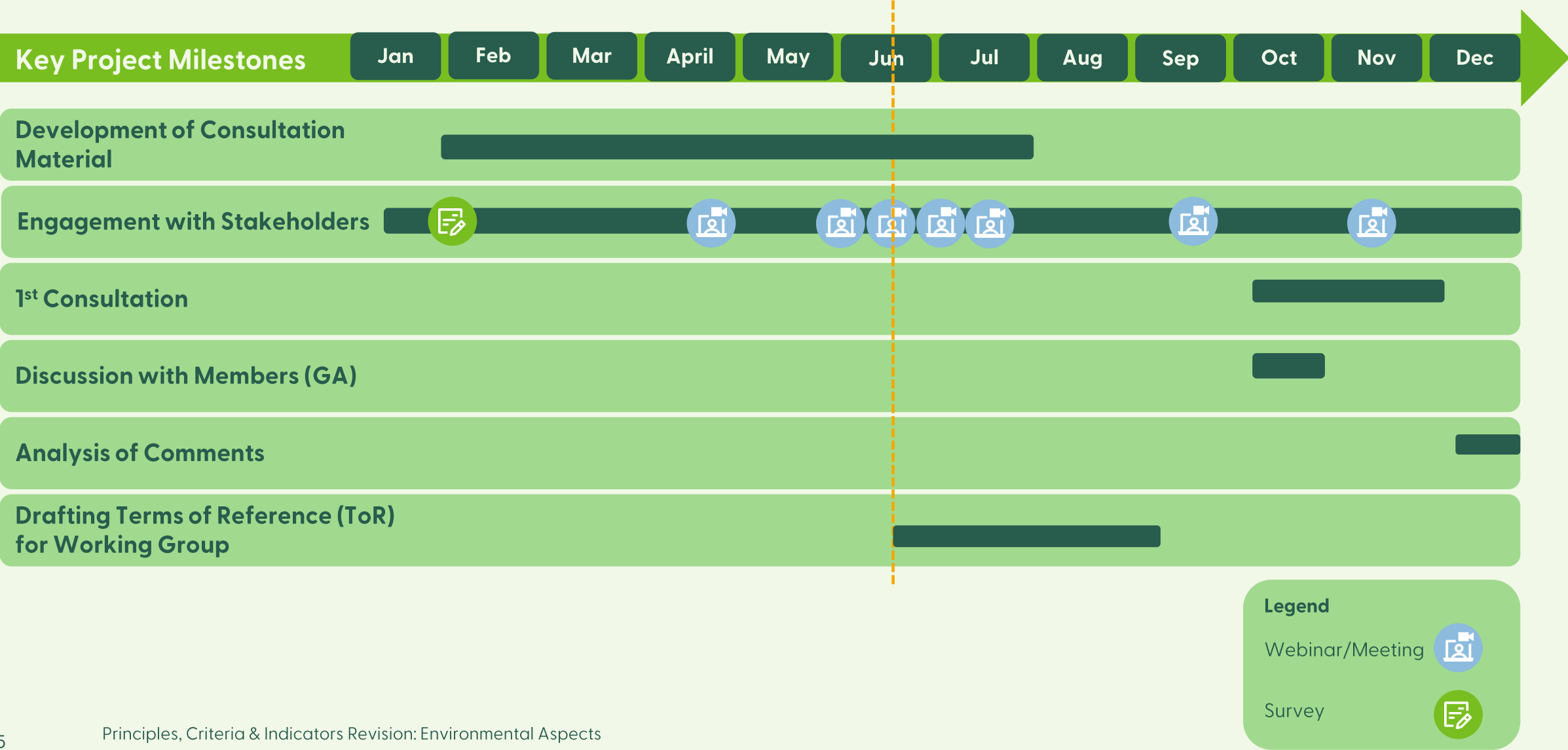


# Key milestones of the major revision process





# Milestones for Conceptual Phase for 2025



## Key Topics

The conceptual phase of this revision is designed around key topics to inform the drafting phase.

# Key main topics

1

## Social Aspects

- Gender and diversity
- Indigenous Peoples
- Workers' Rights
- Community relations

2

## Climate change & biodiversity

- Understand where climate is included
- Enhance biodiversity

3

## Scope & Applicability

- Applicability of the scope of the P&C (to widen or narrow the scope)
- User-focused approach

4

## Outcome Orientation

- General incorporation into PCI
- Defining intended outcomes from forest stewardship



## Environmental Aspects



Biodiversity  
conservation



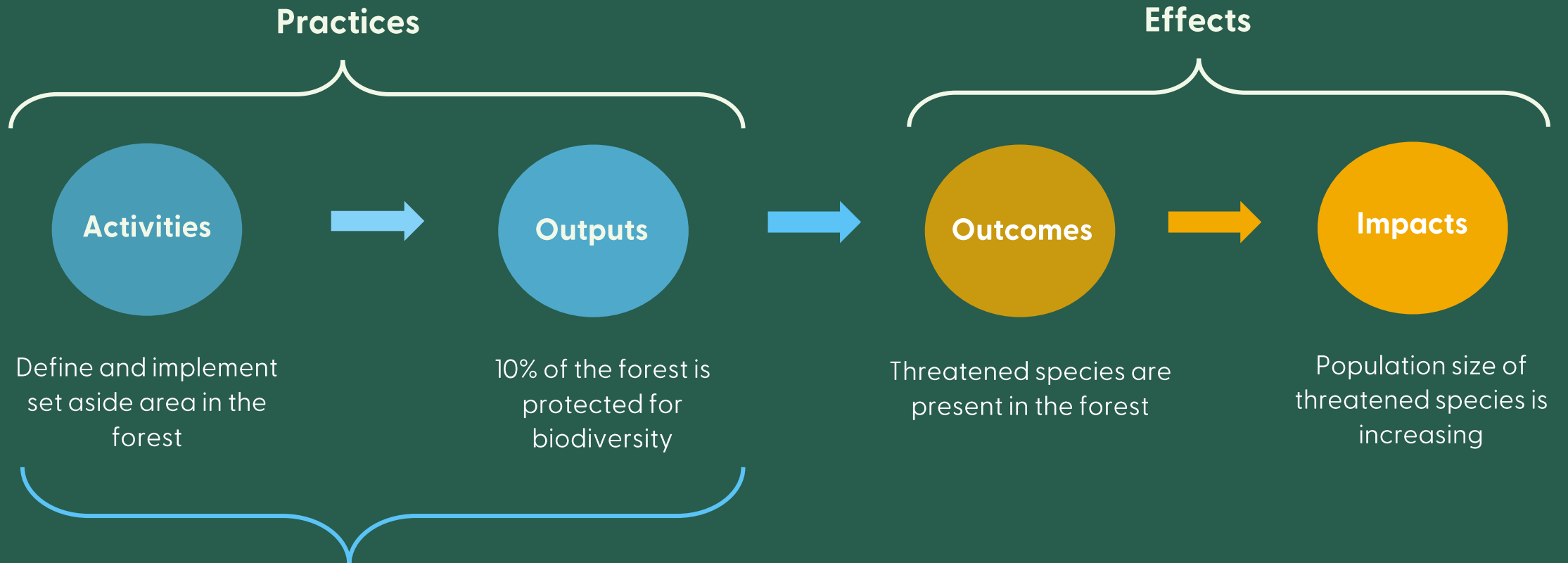
Climate change





# Intended outcomes

Outcomes refer to the short to medium-term effects resulting from the implementation of activities.



The PCI strongly relate to good practices

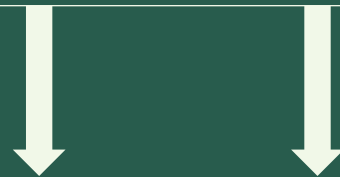


# Outcome orientation. Our concept

Outcome orientation means that the development and implementation of standards is guided by a **few prioritized key intended outcomes**, and that **progress** against these is demonstrated.

By making our standards outcome-oriented, we want to:

1. Bring more focus on **what to be achieved**, the result of activities.
2. Gather **data-driven insights** about the effects of FSC forest management activities.



Foster the **demonstration** of **positive** outcomes of certification

Foster the **improvement** of standards based on **data** and **insights**

# Outcome orientation. The deployment

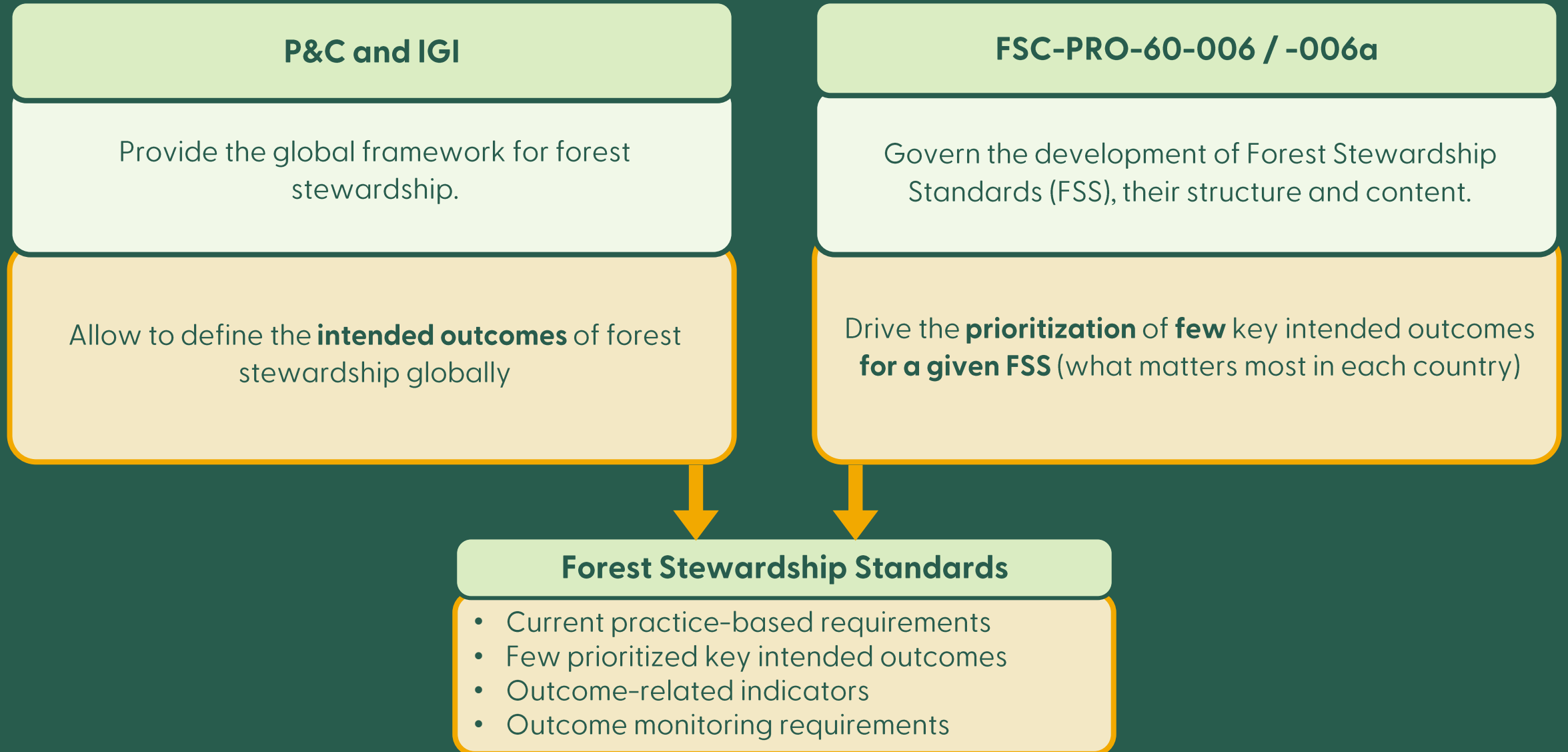
## P&C and IGI

Provide the global framework for forest stewardship.

## FSC-PRO-60-006 / -006a

Govern the development of Forest Stewardship Standards (FSS), their structure and content.

# Outcome orientation. The deployment





# Outcome orientation. The deployment

## P&C and IGI

Provide the global framework for forest stewardship.

Allow to define the **intended outcomes** of forest stewardship globally



**Today's focus:**  
What are the **environmental intended outcomes** of forest stewardship?

## FSC-PRO-60-006 / -006a

Govern the development of Forest Stewardship Standards (FSS), their structure and content.

Drive the **prioritization** of **few** key intended outcomes **for a given FSS** (what matters most in each country)



- Important normative document for the deployment of outcome-orientation
- **Outside the scope of this presentation**
- Public consultation upcoming in October

# Example of intended outcomes

**Long-term  
intended impact:**

**Integrity of forest ecosystems** resembles that of a reference forest ecosystem



**Intended outcomes:**

**Forest structure and composition**  
resembles that of a reference  
forest ecosystem

**Forest functional processes**  
resembles that of a reference  
forest ecosystem

# Example of intended outcomes

Long-term  
intended impact:

**Integrity of forest ecosystems** resembles that of a reference forest ecosystem

Intended outcomes:

**Forest structure and composition**  
resembles that of a reference  
forest ecosystem

**Forest functional processes**  
resembles that of a reference  
forest ecosystem

Related topics  
(scope of Criteria):

Rare and threatened  
species (6.4)

Native species/  
ecosystems (6.5; 6.6)

Ecological  
processes (6.3;  
6.6)

Resilience to  
climate-change  
(6.8)

Water cycling  
(6.7; 10.5;  
10.6)

Landscape/  
connectivity  
(6.8)

Deadwood  
(6.6)

Forest cover  
(6.9; 6.10)

Climate regulation /  
C sequestration (6.3)

Soil health / nutrient  
cycling (10.5; 10.10)





# Biodiversity conservation



# PCI and Biodiversity Conservation

**P1**  
Compliance with ratified international conventions

**P6**  
Maintaining, conserving,  
restoring habitats, landscapes,  
and native species

**P9**  
Protection of High Conservation  
Values: species, habitats,  
ecosystems, ecosystem services

**P10**  
Forestry activities are implemented  
environmentally-responsible and favor  
less-intensive/invasive alternatives

**P2**  
Job-specific training for effective implementation

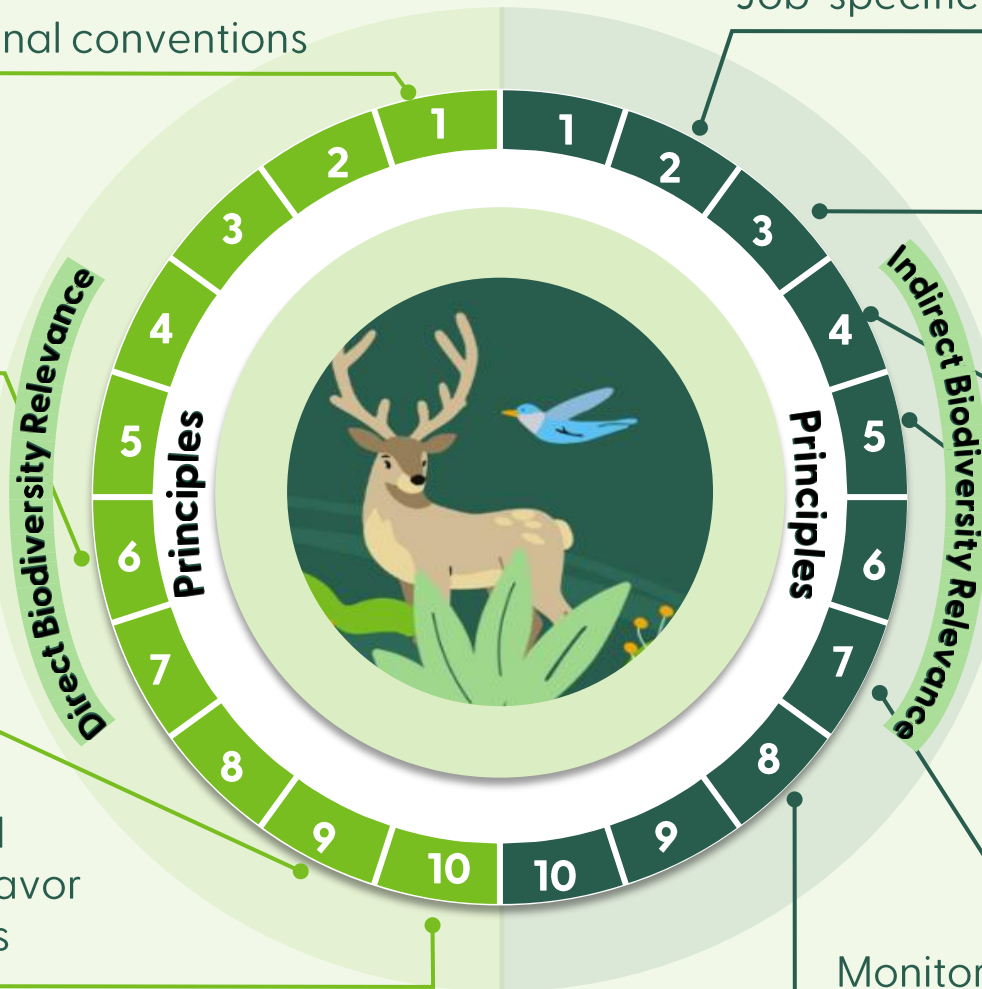
**P3**  
Indigenous Peoples' strong links to  
territories and significant sites

**P4**  
Sites of ecological  
significance to local people

**P5**  
Sustainable resource use and  
maintenance of ecosystem  
functions

**P7**  
Environmentally sound planning  
and management, with  
biodiversity being a core element

**P8**  
Monitoring and assessment of environmental  
impacts, including biodiversity values



# High Conservation Values in PCI

## Principle 9



The Organization shall maintain and/or enhance the High Conservation Values in the Management Unit through applying the precautionary approach

### Related Criteria

Guidance documents for HCVs (e.g. National HCV Framework)

Assess and record presence of HCVs

Develop strategies to maintain and/or enhance HCVs

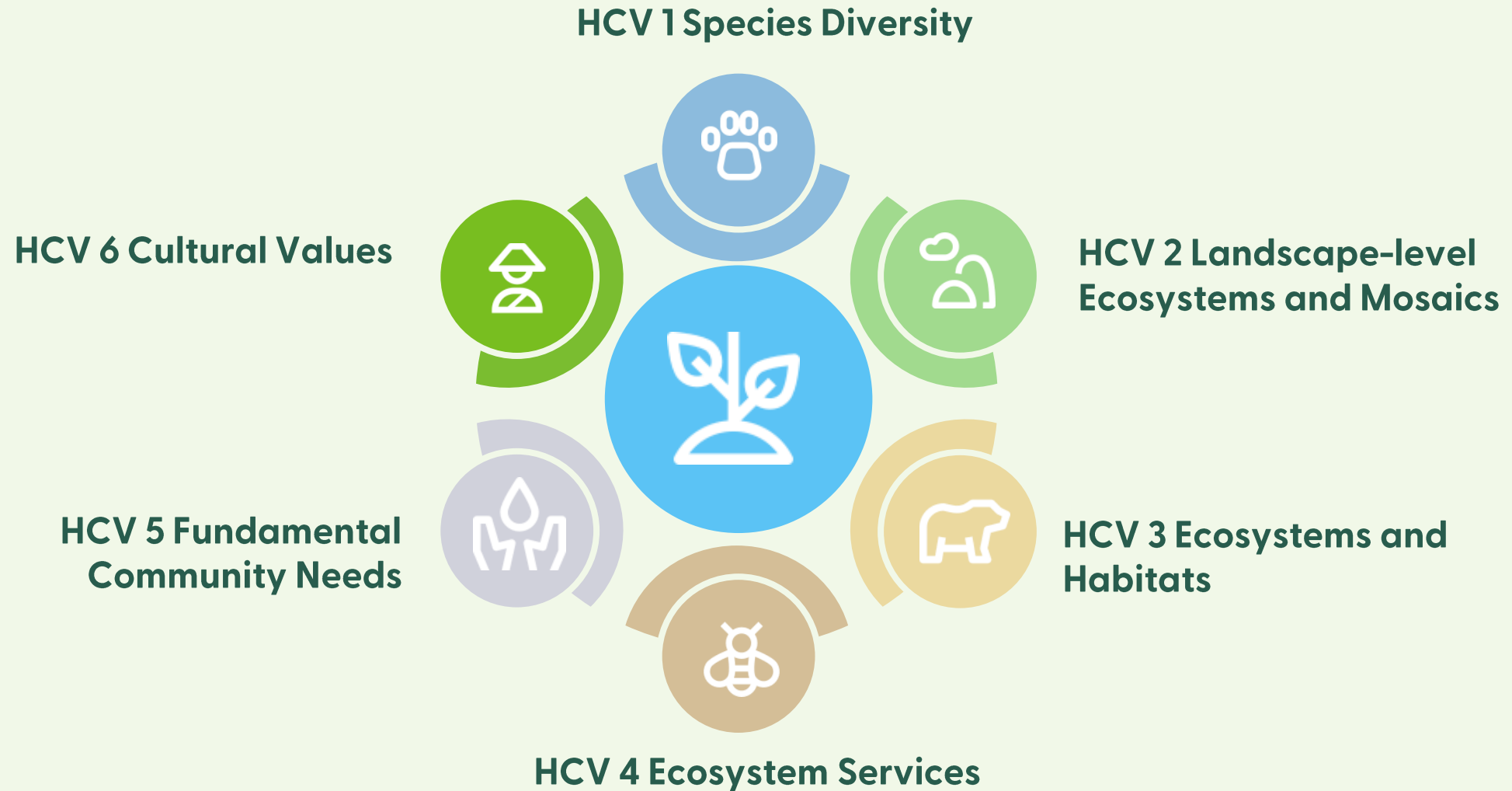
Implement strategies to maintain and/or enhance HCVs

Monitor to assess changes of HCVs





# Six categories of HCVs





# Environmental Values and Impacts in PCI

## Connection with Principle 6



**The Organization shall maintain, conserve and/or restore ecosystem services and environmental values of the Management Unit, and shall avoid, repair or mitigate negative environmental impacts.**

### Related Criteria

Assessment of  
Environmental  
Values

Assessment of  
Impacts

Prevention,  
mitigation  
and  
remediation  
of impacts

Protect rare  
and threatened  
species and  
their habitats

Representative  
sample Areas ,  
Conservation  
zones, Protection  
Areas,  
Conservation  
Areas Network

Maintain,  
enhance and  
restore native  
ecosystems  
and habitat  
features,



# Implementation of Management activities in PCI

## Connection with Principle 10



Management activities conducted by or for the Management Unit of The Organization shall be selected and implemented consistently with The Organization's economic, environmental, and social policies and objectives, and in compliance with the Principles and Criteria collectively.

### Related Topics

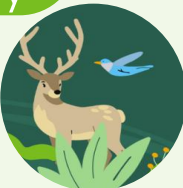
Native  
Species and  
Local  
Genotypes

Use  
silvicultural  
systems and  
practices

No GMOs

Reduce  
potential  
negative  
impacts of  
Natural  
hazards

Minimize  
effects of  
infrastructural  
development  
and silviculture  
on biodiversity



# Methodology

*Sources to develop recommendations:*

## Desktop Study

- **Review Report**
- **Green Paper**  
Climate Change & Biodiversity by SmartCert (2025)

## Stakeholder feedback

### **Inclusion of biodiversity as a core topic:**

- Survey PCI
- Inputs from on-line survey within the context of development of Green paper
- 1:1 Interviews also from green paper

## Alignment

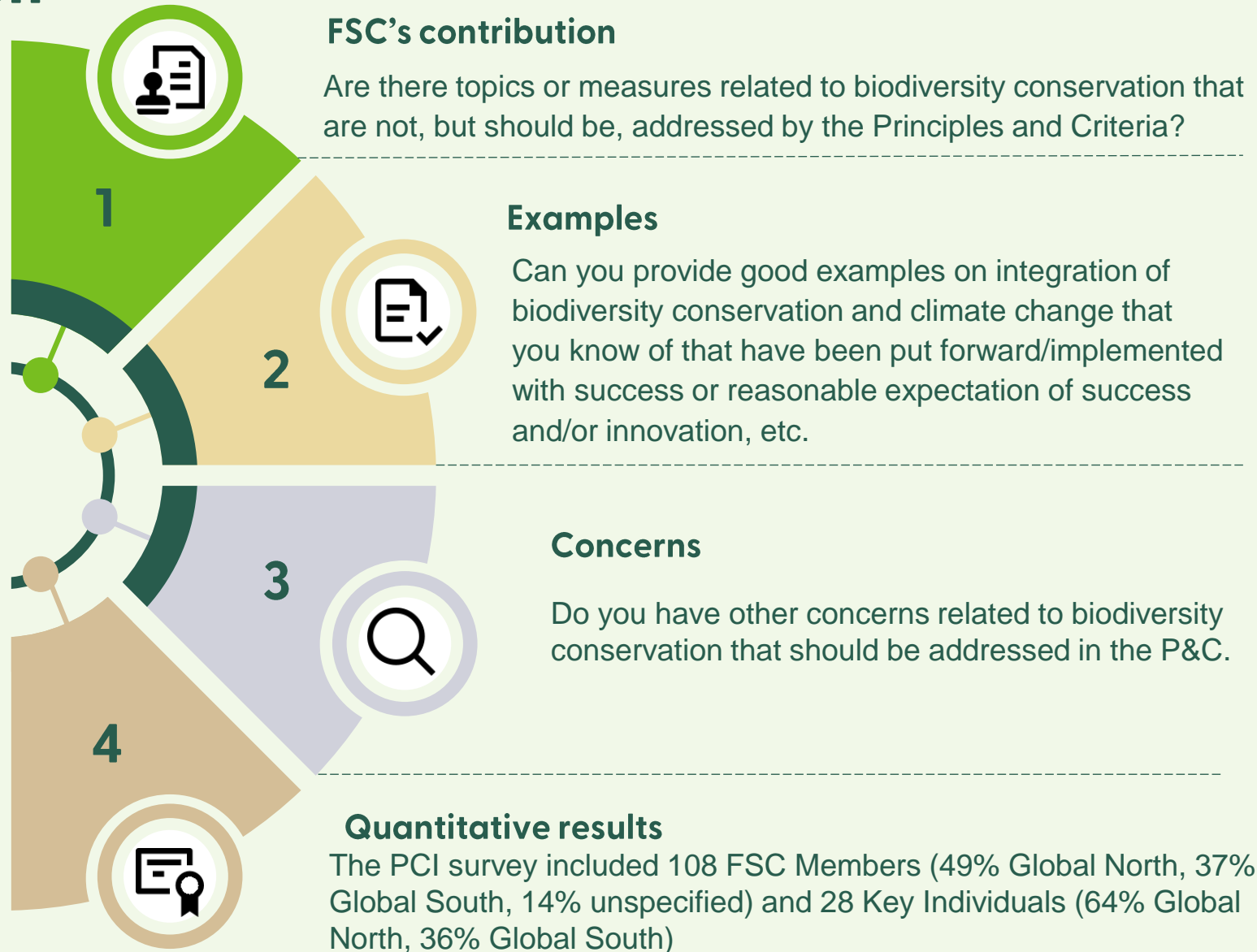
**FSC Climate and Biodiversity Strategic Framework 2026-2032**

**FSC Global Strategy**

**Action 55-** FSC® Conservation and Restoration Solutions



# Questions asked to stakeholders related to biodiversity conservation





# Insights from Feedback

*Internal feedback, interviews and surveys by consultants, survey with members and the consultancy inputs, suggest that the direction for changes to biodiversity conservation in the P&C consider the following:*

## Alignment

- **Alignment with Global Crisis related issues** including biodiversity conservation and restoration
- **Alignment with international agreements** including international biodiversity conservation and climate agreements and updating PCI with **new concepts and challenges**
- Alignment with the **FSC normative framework and Global Strategy**

## Streamlining

- **Decreasing redundancy, overlaps and improve alignment**  
Remove where possible and avoid duplication, without diluting requirements.
- **Increasing clarification and flexibility** for improved implementation

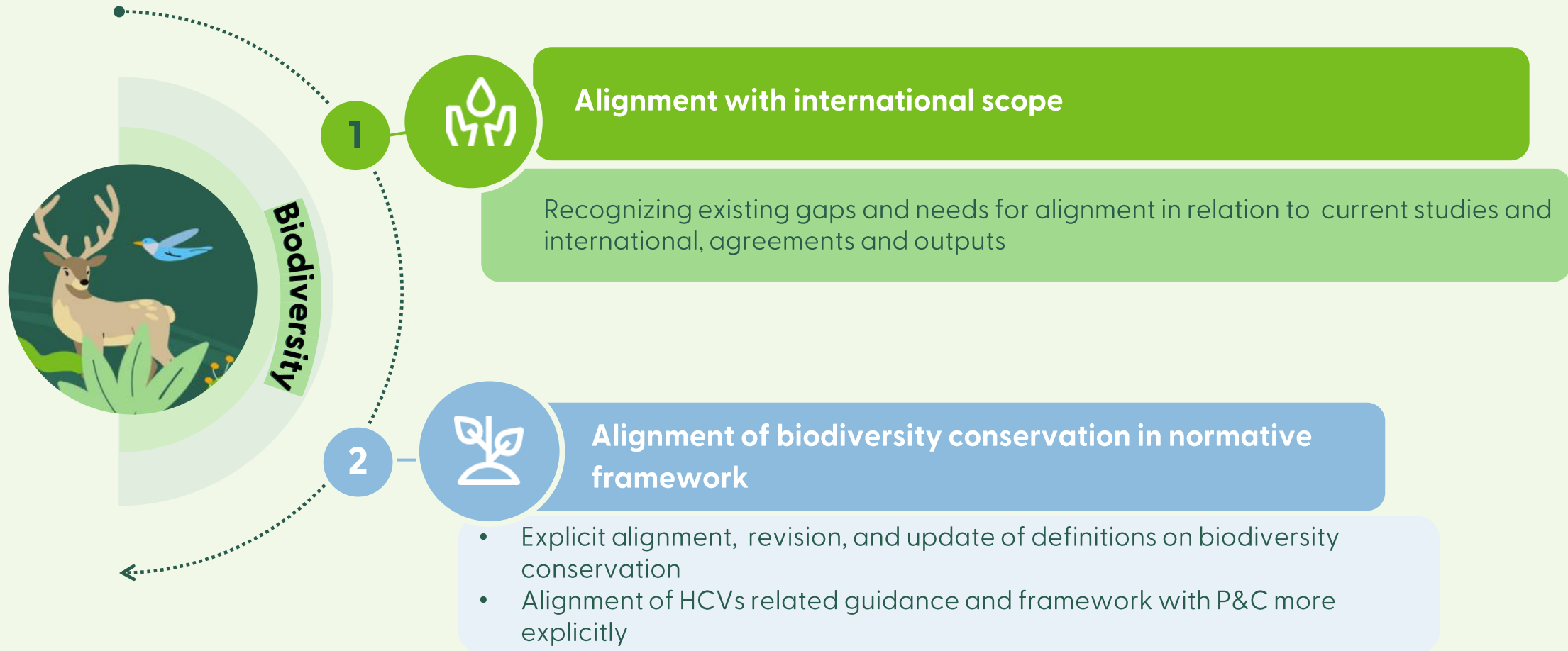
## Improvement

- **Better identification, mapping and monitoring of HCVs**
- Addressing the need for greater content related to **restoration in PCI**
- Better recognition and integration of **traditional ecological knowledge** and **local communities' rights** regarding biodiversity conservation



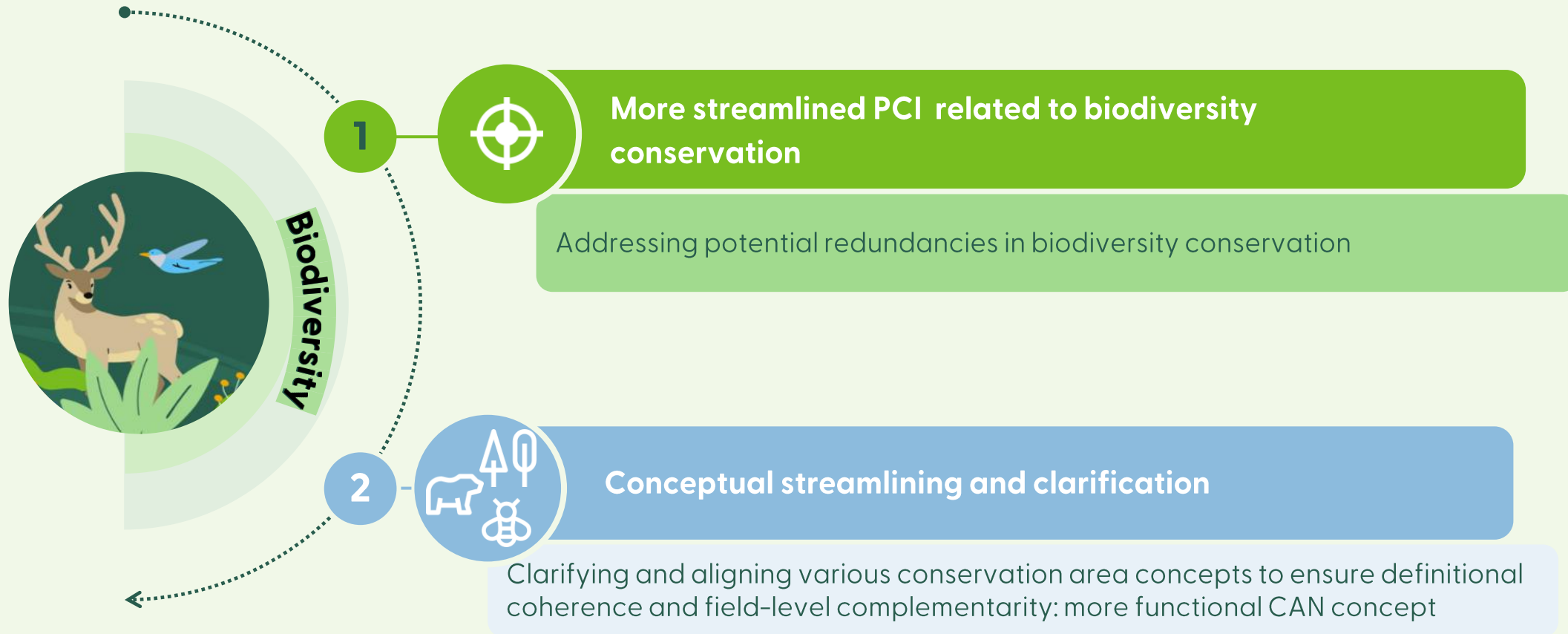
# Recommendations 1/3

## Alignment



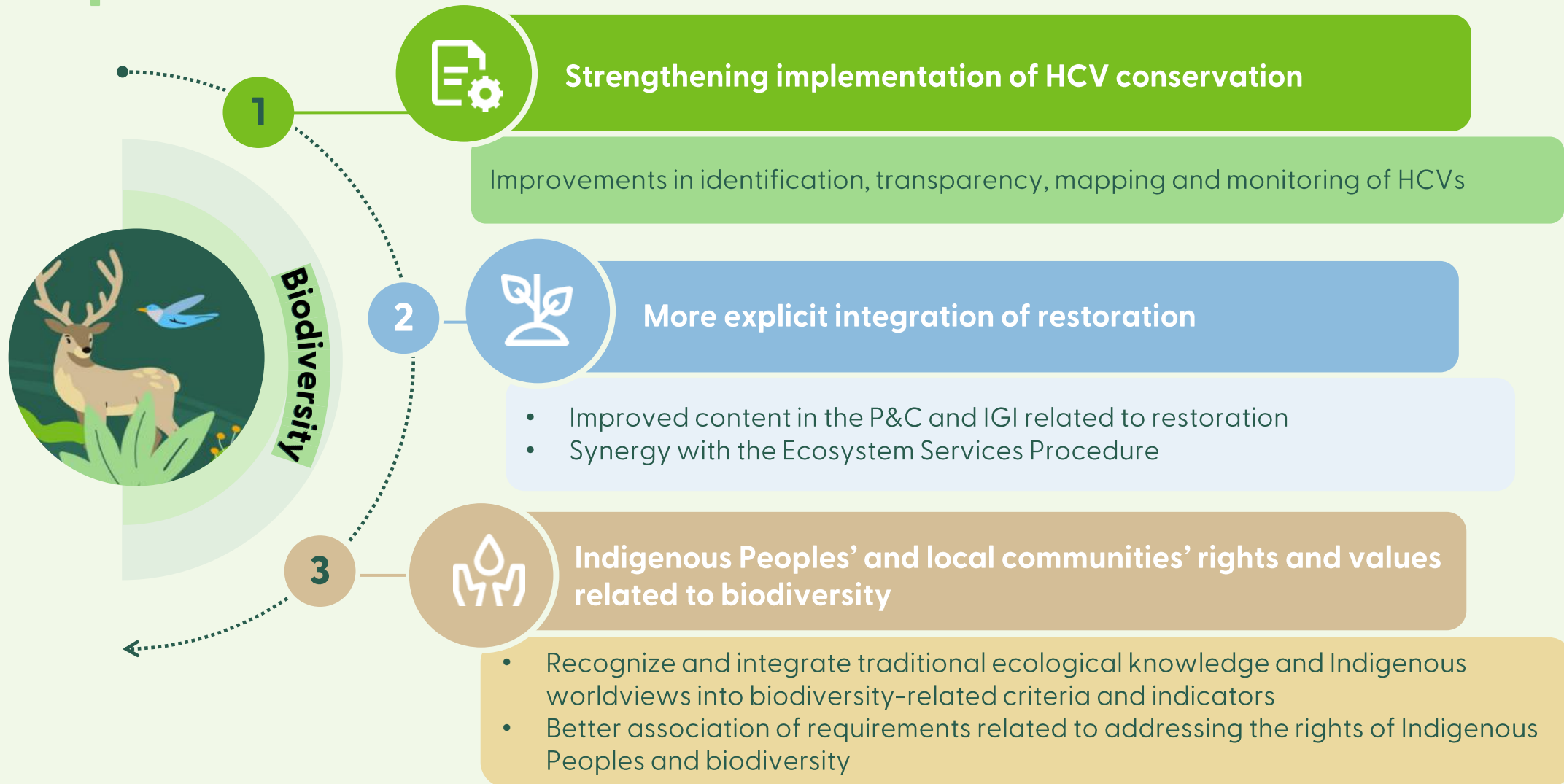
# Recommendations 2/3

## Streamlining



# Recommendations 3/3

## Improvement







# Climate change





## POLL

**Should climate change be explicitly addressed as a core component of the FSC Principles and Criteria?**

# PCI and Climate change

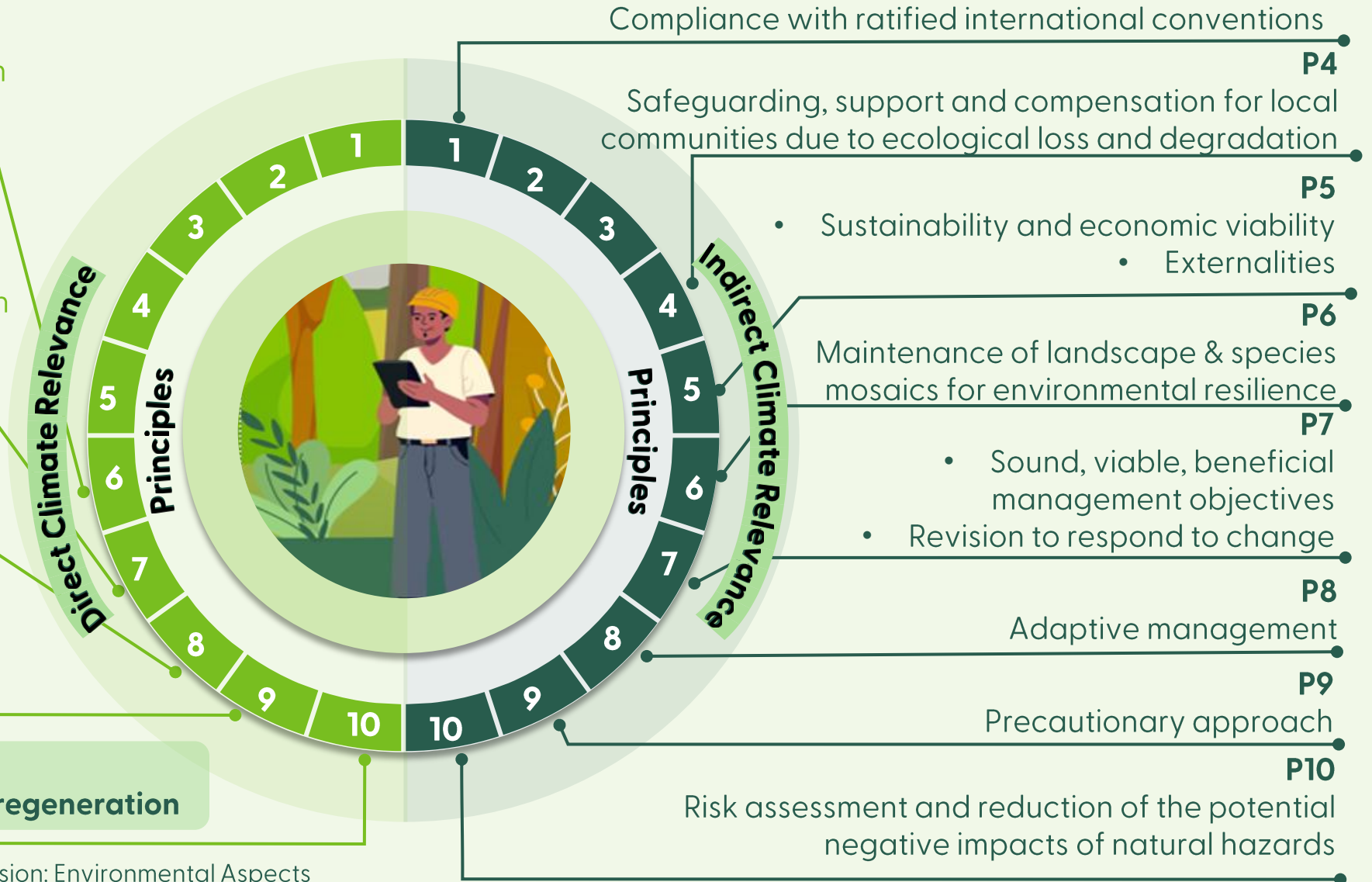
P6 – One minor indication  
Environmental values include carbon sequestration and storage

P7 – One minor indication  
Verifiable targets include soil carbon

P8 – One minor indication  
Monitoring of soil carbon

P9 – Definition-wise indication  
Climate refugia (HCV3)  
Climate regulation (HCV 4)

**P10**  
**Flexibility to use “other species” for regeneration**



# Background

*Processes and frameworks informing changes:*

## Alignment with environmental goals

### International/ global goals:

- Paris Agreement
- UN Sustainable Development Goals

### Internal goals:

- FSC Global Strategy 2021–2026
- FSC-PRO-30-006 Ecosystem Services Procedure
- FSC Climate and Biodiversity Strategic Framework 2026–2032

## Stakeholder's feedback

### Inclusion of climate change as a core topic:

- PCI survey for members
- Inputs from on-line survey within the context of development of Green paper
- 1:1 Interviews also from green paper

## Desk study

### Review Report

#### Action # 55

FSC® Conservation and Restoration Solutions

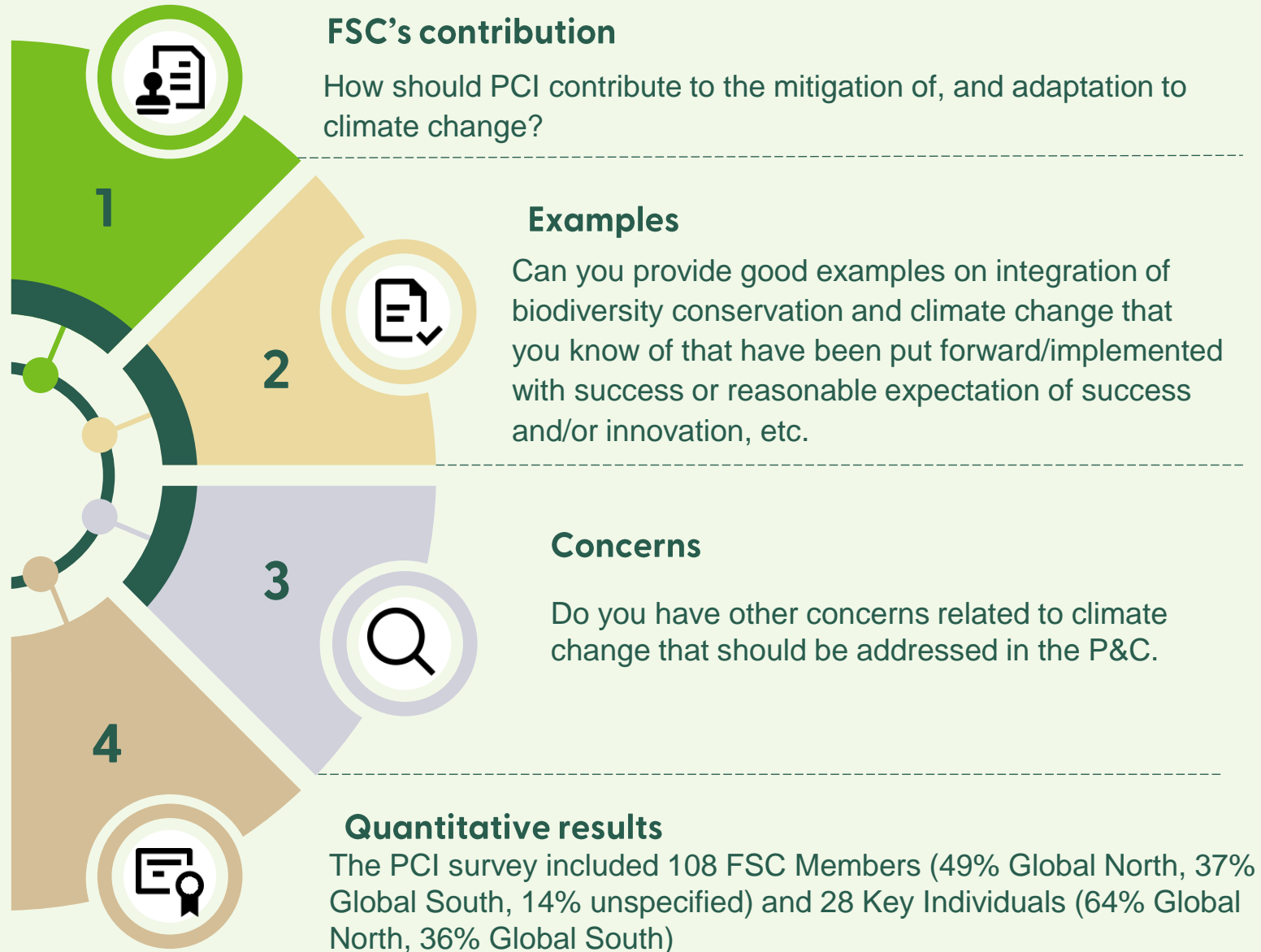
#### Green paper

- Benchmark Analysis developed by SmartCert in 2025





# Questions asked to stakeholders related to climate change



# Insights from Stakeholder Feedback

*Feedback collected from 1:1 Interviews and two online surveys, suggest that the direction for changes in the P&C consider the following:*

## Enhance existing P&C

- Broad agreement that climate considerations should be integrated directly into the P&C for greater impact and visibility.
- Align biodiversity and climate strategies with regional ecological and socio-cultural contexts.

## Challenges

- Lack of structured strategies for climate change mitigation and adaptation.
- Missed opportunities for leadership in climate-smart forestry.
- Absence of climate change vulnerability assessments to inform localized adaptive management and planning.

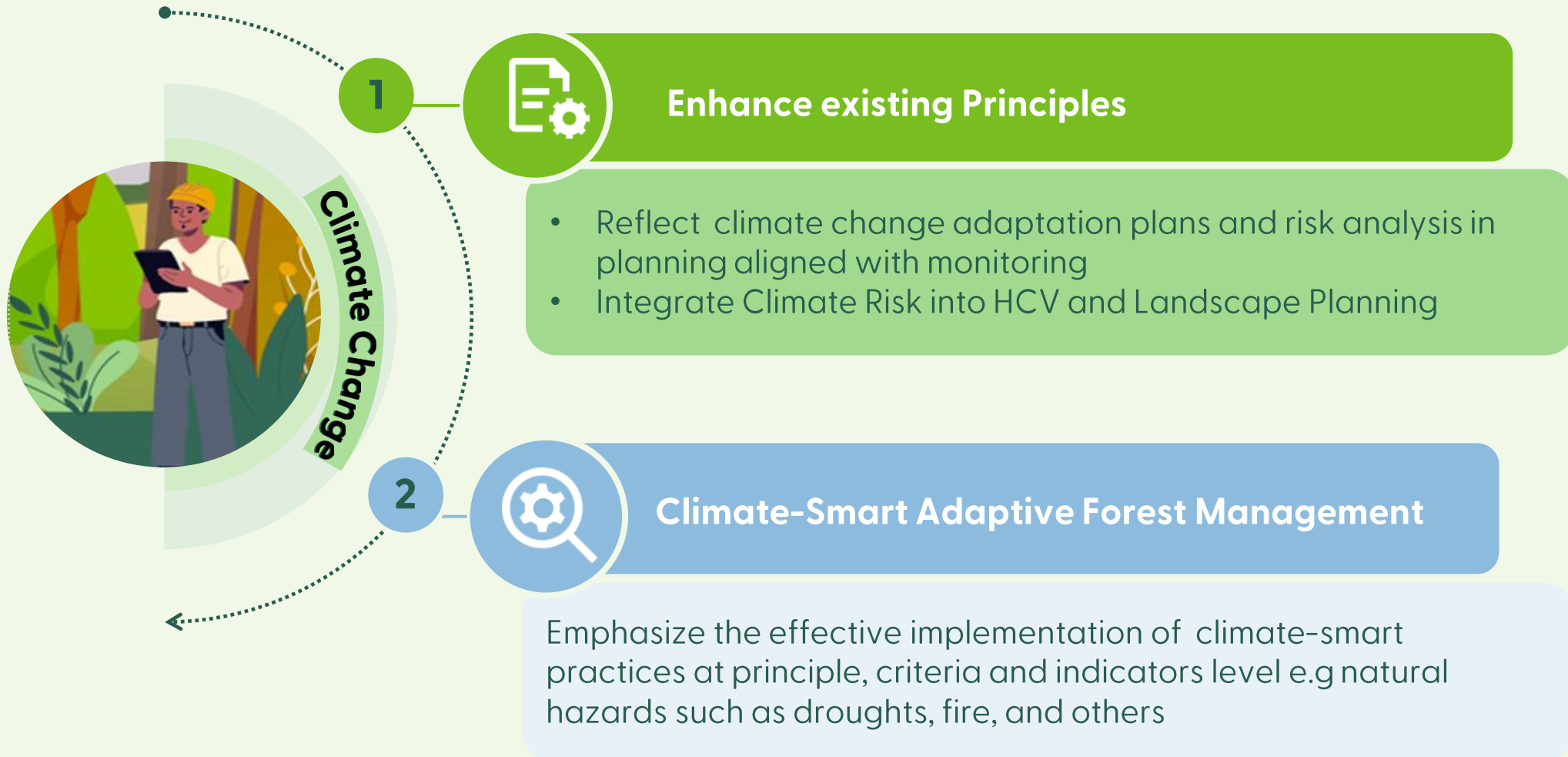
## Capitalize on existing projects

- Recognize traditional knowledge and support Indigenous governance, land rights, and participation in climate and biodiversity initiatives using successful approaches by Indigenous and community-led conservation



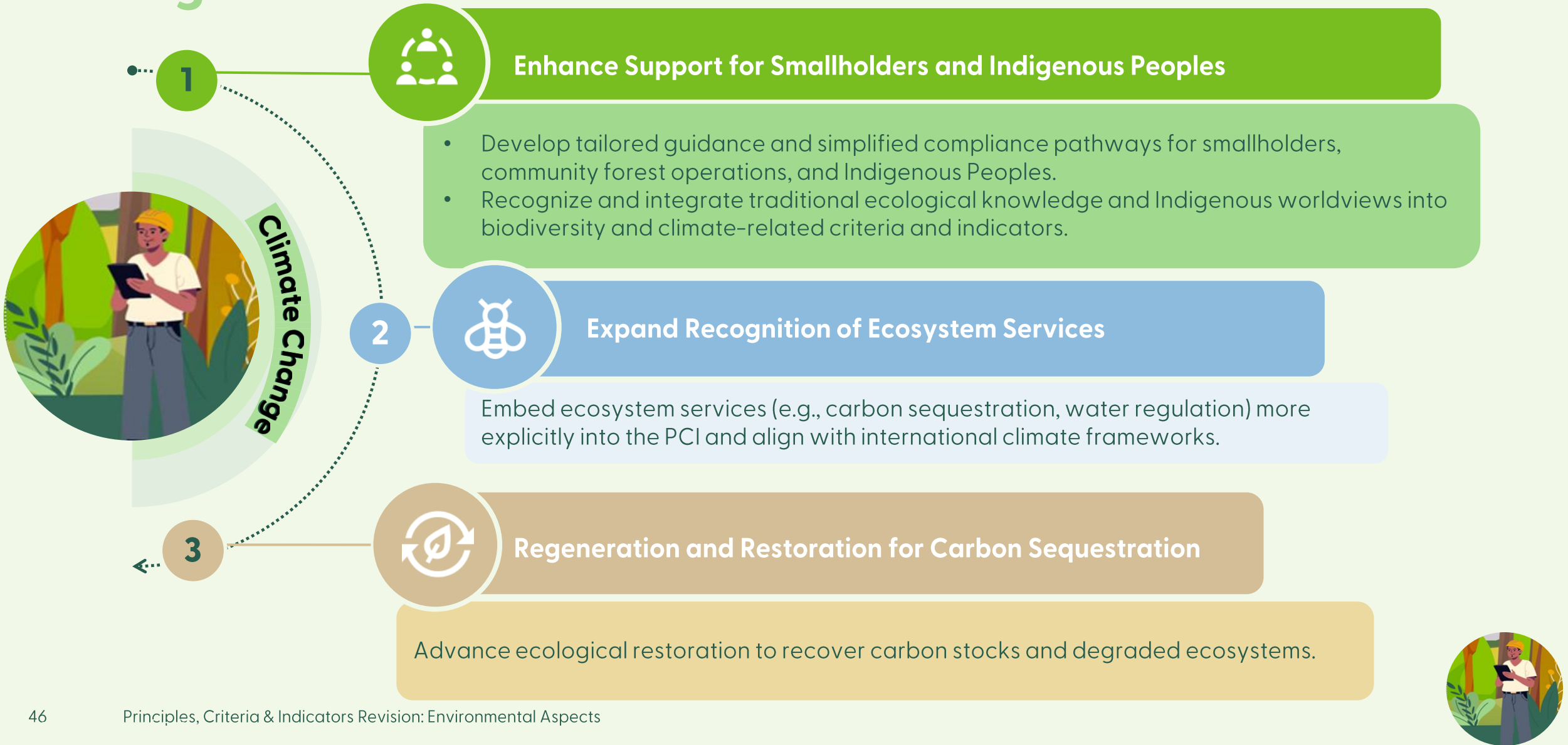
# Recommendations 1/3

## Integrated directly into the P&C



# Recommendations 2/3

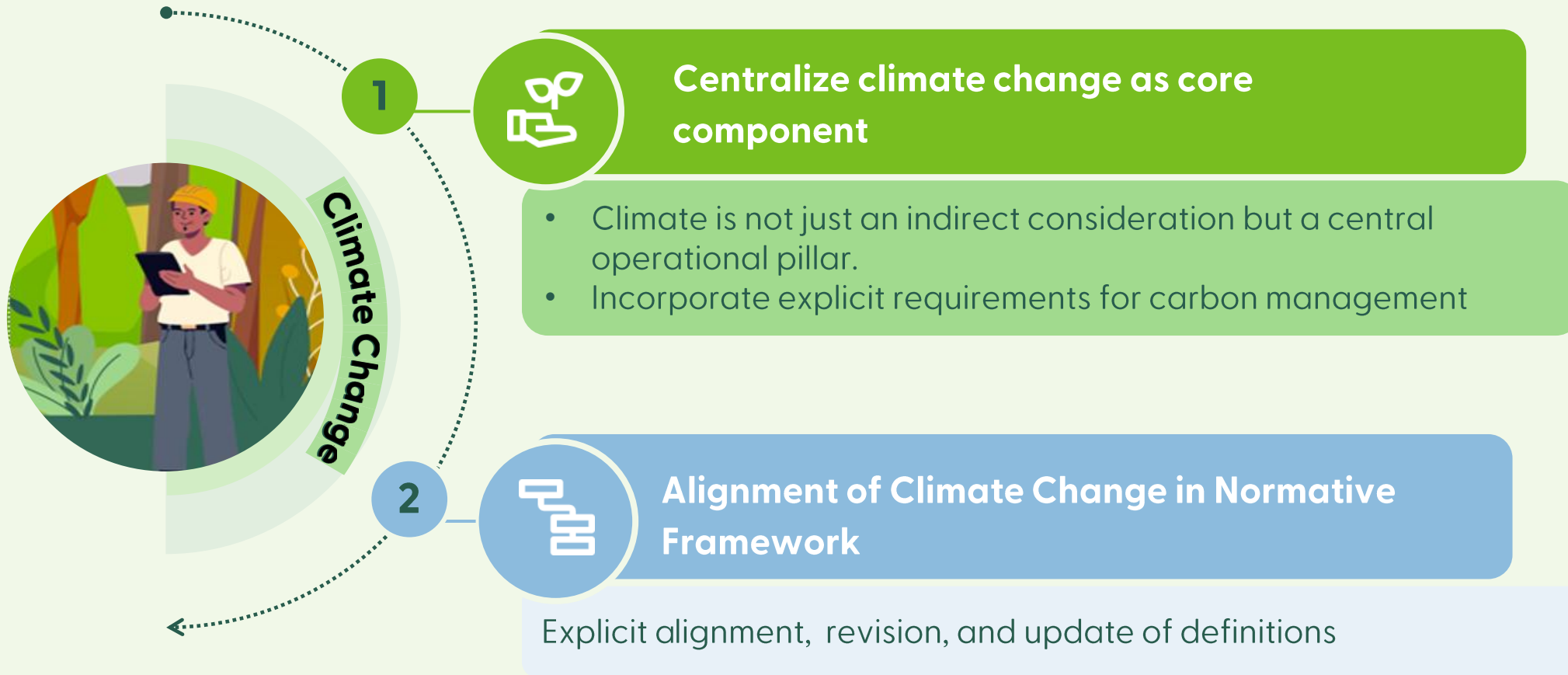
## Management Practices





# Recommendations 3/3

## Consider Structural Changes





**Stay engaged**

# Important events



## PCI Revision Process

- July 9<sup>th</sup> Webinar on Outcome Orientation
- **Public consultation** on conceptual phase: 1 October 2025 – 30 November 2025



## FSC-PRO-60-006 / -006a Development of Country Requirements Revision Process

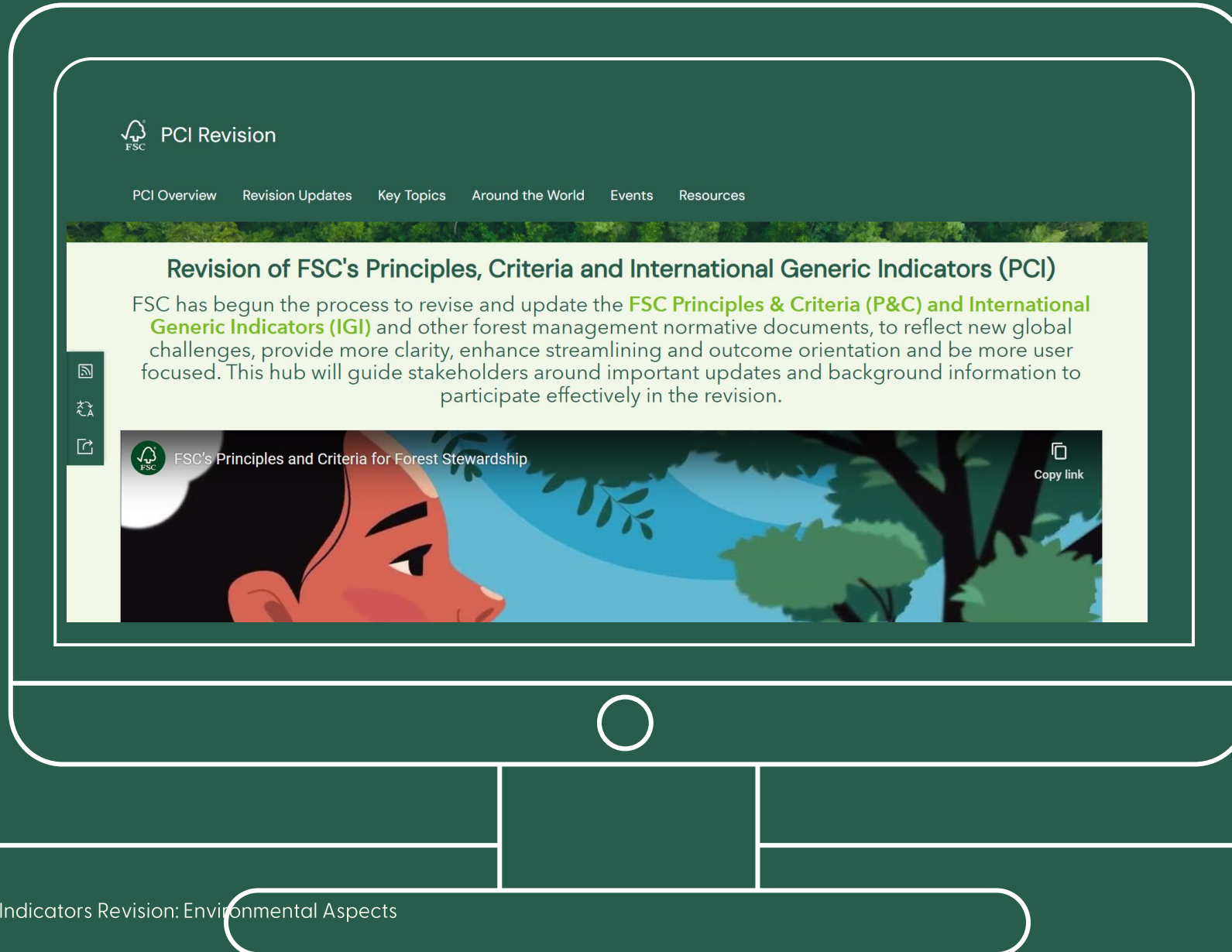
**Public consultation** (covering outcome orientation): 1 October 2025 – 30 November 2025



## FSC General Assembly

Join us at dedicated side events and plenary sessions in Panama from October 25-31

# Stay informed: PCI Revision Hub at [pci.fsc.org](https://pci.fsc.org)





# Thank you



**Forest Stewardship Council®**

**FSC® International Center**



Adenauerallee 134, 53113 Bonn, Germany

T +49 (0) 228 367 66-0

F +49 (0) 228 367 66-65

FSC International Center © All rights reserved

FSC® F000100

**[www.fsc.org](http://www.fsc.org)**